

**JOHN DEERE
227 CORN PICKER
AND 227-S
CORN SNAPPER
(SN 227-51249)**



JOHN DEERE

OPERATORS MANUAL

**JOHN DEERE 227 CORN PICKER
AND 227-S CORN SNAPPER (SN
227-51249)**

OMN97600 A2 English

**JOHN DEERE DES MOINES WORKS
OMN97600 A2**

LITHO IN THE U.S.A. (REVISED)
ENGLISH



To the purchaser

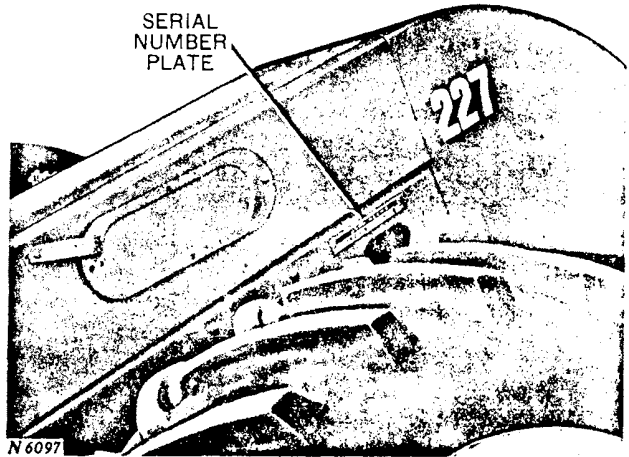
The purpose of this book is to give you useful information on how to operate your new John Deere 227 Corn Picker or 227-S Corn Snapper in the many field and crop conditions under which corn is grown.

A corn picker or corn snapper must be built to handle a wide range of conditions. Average conditions can be handled by the standard equipment with which the machine is shipped. However, unusual conditions may require some special equipment. Your new machine will do a type of work directly proportional to the amount of care you use in operating it.

Field conditions vary from year to year, from day to day and even from hour to hour. Different varieties of corn present widely different picking problems. A careful study of adjustments on your picker or snapper and what they accomplish under different conditions will allow you to reap the many benefits and economies that a picker or snapper can provide. This manual contains operational information for the corn picker as well as the corn snapper. If you have purchased a corn snapper, disregard any reference to the husking rolls, husk auger, etc.

If you find you need information not covered in this manual, see your John Deere dealer. He has the latest information on how to get the best service from your picker or snapper and can give you prompt "know-how" service in the field or in his shop.

When in need of parts, go to your John Deere dealer who carries genuine John Deere parts for your corn picker or corn snapper. Be sure to give him the serial number of your machine and the year purchased. This information should be recorded in the space provided on this page as soon as you have received your picker or snapper.



Model Number
Serial Number
Date Purchased

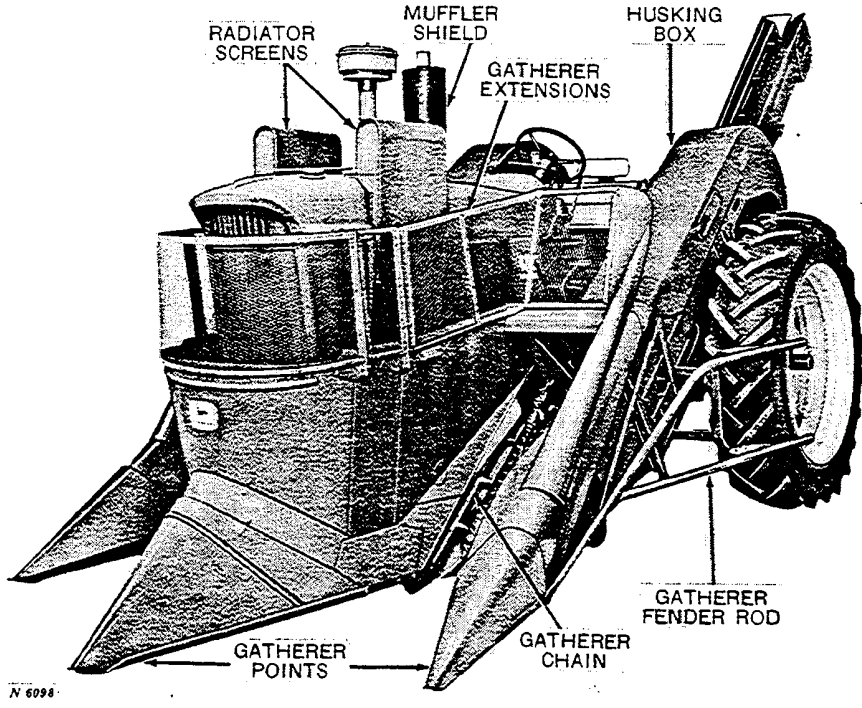
You will find the Serial Number Plate on the left-hand outer main frame as illustrated above.

There also may be an identification number for inspection records on the right-hand row unit. Don't confuse this number with the serial number.

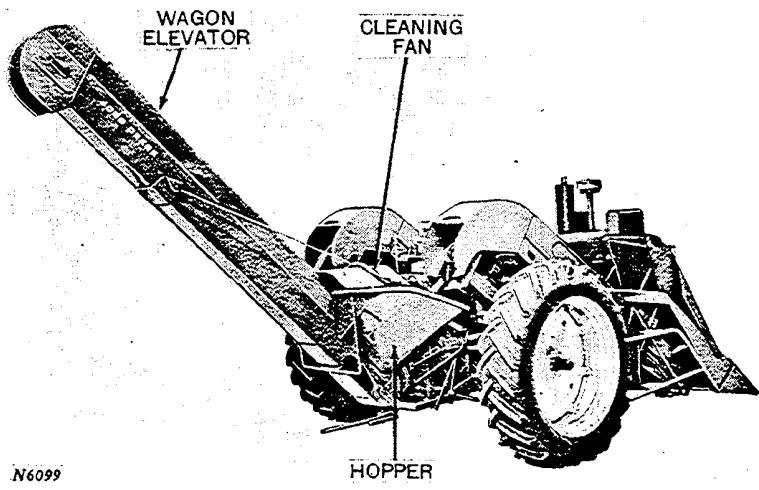


contents

	Page
SPECIFICATIONS	3
OPERATION	4-13
Tractor engine - PTO speed	4
In the field	4
Gatherers	6-7
Row spacing	7-8
Snapping rolls	8
Trash knives	8
First elevator conveyor chain	9
Husking rolls	9-10
Husk auger	10
Shelled corn auger	10
Wagon elevator	10-11
Drive chains	11
Slip clutches	12
Fire prevention	12
Safety suggestions	13
TROUBLE SHOOTING	14-16
LUBRICATION	17-23
REMOVING AND ATTACHING PICKER OR SNAPPER	25-81
2010, 3010, 4010	26-44
530, 630, 730, 520, 620, 720, 50, 60, 70, A	45-68
430, 420	69-81
SERVICE	82-83
ATTACHMENTS	84-91



John Deere 227 Corn Picker and 4010 Tractor



John Deere 227 Corn Picker and 4010 Tractor



specifications

No. of rows	2
Right- or left-hand machine	Center
Center-to-center distance between snapping units, inches	Adjustable 39 to 41
Row widths handled, inches	38 to 44 inches
Gatherer points hinged or rigid	Hinged
Gatherer points, high lift	27 to 30 inches at hinge point
Points hinged above or below gatherer chains	Above
No. of gatherer chains per snapping unit	2
Type of gatherer chains	Steel roller chain
Minimum clearance between gatherer chains and ground, inches	0 inches and up
Distance gatherer chains ahead of snapping rolls entry, inches	16 inches
Length of snapping rolls, inches (including points)	41 inches
Snapping roll adjustment	Selected by operator from tractor seat
Width of snapped corn elevator, inches	6-1/2 to 10 inches
No. of husking rolls (corn picker only)	8
Diameter of husking rolls, inches (corn picker only)	3 inches
Length of husking rolls, inches (corn picker only)	36 inches
Type of husking rolls: rubber roll (corn picker only)	Spiral-grooved and notched
Mating roll (corn picker only)	Smooth rubber
Shelled corn saver (corn picker only)	Yes
Type of shelled corn saver (corn picker only)	Auger
No. of cleaning fans	1
Depth first elevator, inches	8 inches
Width first elevator, inches	9 to 12-3/4 inches
Wagon elevator location	Centered between two rows being picked
Can machine be used without wagon hitch	No
Width over-all of picker or snapper for transport	8 feet, 4 inches
Wagon elevator folded or removed for transport	Neither
Wagon elevator throw-out	Semi-automatic
Approximate shipping weight, picker with hookup	2970 lbs. approx.
Approximate shipping weight, snapper with hookup	2745 lbs. approx.

Attachments

Spiral Strips for Lug-Type Snapping Rolls	Husking Roll Covers
Gatherer Fender Rods (For tractors that are mounted from the rear)	Ladder (For mounting tractor from the rear)
Gatherer Fender Rods (For tractors that are mounted from the side)	Gatherer Sheet Extensions
Low-Lugged Snapping Rolls	Wagon Elevator Extension
Steel Wagon Box Flare Boards	Stalk Lifter Rods
PTO Sprocket (27 tooth) to Maintain Picker Speed with Slower Tractor rpm	Wagon Elevator Cover
	High Speed Fan Sheave
	Square Steel Flights for First Elevator

(Specifications and design subject to change without notice.)

Thank you so much for reading.
Please click the “Buy Now!”
button below to download the
complete manual.



After you pay.

You can download the most
perfect and complete manual in
the world immediately.

Our support email:

ebooklibonline@outlook.com