

# 277 Corn Picker and 227-S Corn Snapper (Serial No. 277-55000)



JOHN DEERE

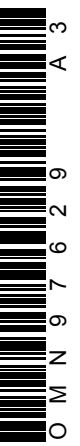
## OPERATORS MANUAL

277 Corn Picker and 227-S Corn  
Snapper (Serial No. 277-55000)

OMN97629 Issue A3 English

OMN97629 Issue A3

LITHO IN U.S.A.  
ENGLISH



## TO THE PURCHASER

The purpose of this book is to give you useful information on how to operate your new John Deere 227 Corn Picker or 227-S Corn Snapper in the many field and crop conditions under which corn is grown.

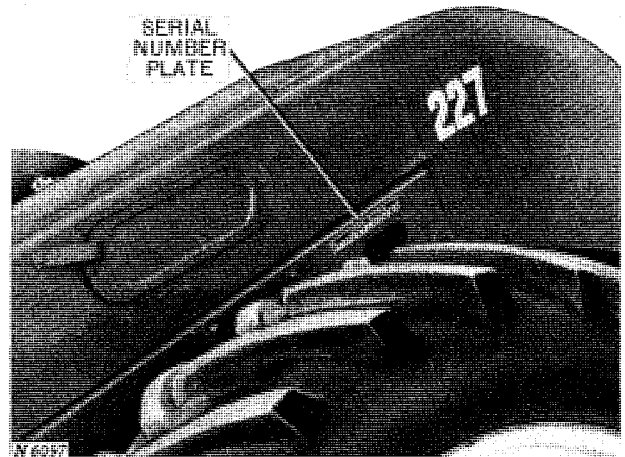
A corn picker or corn snapper must be built to handle a wide range of conditions. Average conditions can be handled by the standard equipment with which the machine is shipped. However, unusual conditions may require some special equipment. Your new machine will do a type of work directly proportional to the amount of care you use in operating it.

Field conditions vary from year to year, from day to day and even from hour to hour. Different varieties of corn present widely different picking problems. A careful study of adjustments on your picker or snapper and what they accomplish under different conditions will allow you to reap the many benefits and economies that a picker or snapper can provide. This manual contains operational information for the corn picker as well as the corn snapper. If you have purchased a corn snapper, disregard any reference to the husking rolls, husk auger, etc.

Right-hand and left-hand references are determined by standing at the rear of the corn picker and facing in the direction of travel.

If you find you need information not covered in this manual, see your John Deere dealer. He has the latest information on how to get the best service from your picker or snapper and can give you prompt "know-how" service in the field or in his shop.

When in need of parts, go to your John Deere dealer who carries genuine John Deere parts for your corn picker or corn snapper. Be sure to give him the serial number of your machine and the year purchased. This information should be recorded in the space provided on this page as soon as you have received your picker or snapper.



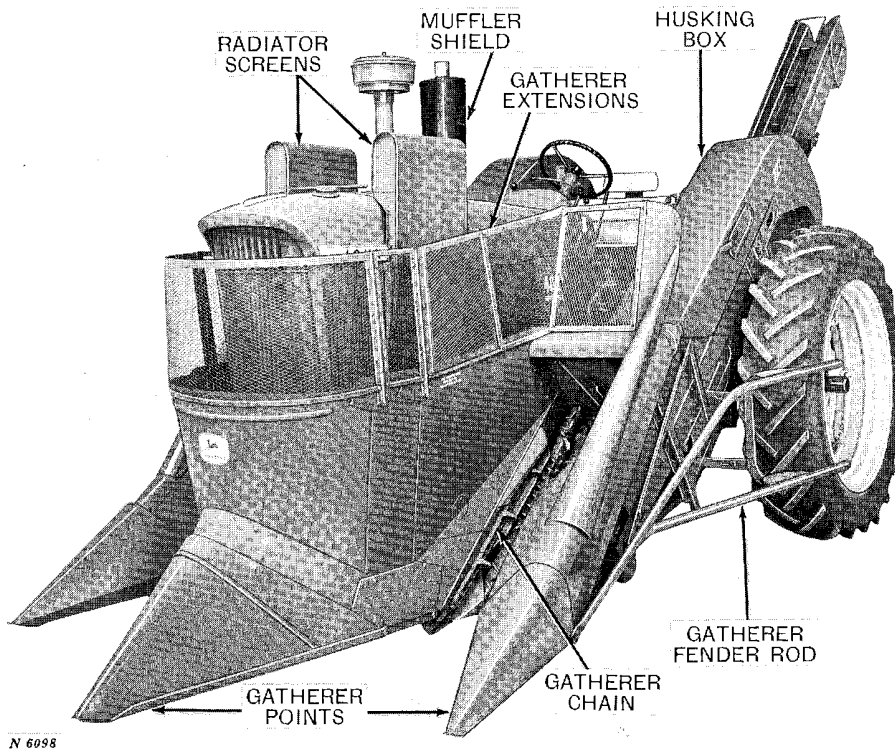
Model Number . . . . .  
Serial Number . . . . .  
Date Purchased . . . . .

The Serial Number Plate is on the outside of the left-hand row unit as illustrated above.



# CONTENTS

SPECIFICATIONS . . . . .	3	Wagon Elevator . . . . .	11-12
OPERATION . . . . .	4-15	Cleaning Fan . . . . .	11
Tractor engine - PTO speed . . . . .	4	Clean-Out Opening . . . . .	11
In the field . . . . .	4	Adjusting Conveyor Chain . . . . .	11
Field Losses . . . . .	5	Wagon Elevator Throw-Out . . . . .	12
Fire Prevention . . . . .	5	Elevator Alignment . . . . .	12
Gatherers . . . . .	6-7	Elevator Hanger Rods . . . . .	12
Gatherer points . . . . .	6	Drive Chains and Slip Clutches . . . . .	13
Gatherer chains . . . . .	6-7	Adjusting Drive Chains . . . . .	13
Row Spacing . . . . .	7	Adjusting Slip Clutches . . . . .	13
Snapping Rolls . . . . .	7-8	Corn Picker Lift . . . . .	14
Adjusting Snapping Rolls . . . . .	8	Warning Lights . . . . .	14
Timing Snapping Rolls . . . . .	8	Safety Suggestions . . . . .	15
Trash Knives . . . . .	9	TROUBLE SHOOTING . . . . .	16-18
First Elevator Conveyor Chain . . . . .	9	LUBRICATION . . . . .	19-24
Adjusting Chain . . . . .	9	REMOVING AND MOUNTING PICKER	
Adjusting Guide Rod . . . . .	9	OR SNAPPER . . . . .	25-55
Husking Rolls . . . . .	10	SERVICE . . . . .	56-57
Inspection Door . . . . .	10	ATTACHMENTS . . . . .	58-65
Adjusting Husking Rolls . . . . .	10		
Husking Box Gears . . . . .	10		
Husk Auger . . . . .	11		
Shelled Corn Auger . . . . .	11		



*John Deere 227 Corn Picker and 4010 Tractor*



# SPECIFICATIONS

## TRACTORS

John Deere 2010, 3010, 4010, 530, 630, 730, 520, 620, 720, 50, 60, 70, and A Tractors.  
Farmall 460, 560, 450, 400, 350, 300, Super M-TA, Super M and M Tractors.  
Allis-Chalmers WD, WD45, D17 and D17 Diesel Tractors.  
Massey-Harris 44 and 444 Tractors.  
Tractor must be equipped to operate remote hydraulic cylinder.

## CYLINDER

An 8-inch stroke, double acting ASAE standard hydraulic cylinder is required.

## DRIVE

1000 rpm PTO on John Deere 2010, 3010, and 4010 Tractors.  
540 or 1000 rpm PTO on other tractors.

## SNAPPING ROLLS

Length, including points - 41 inches.  
Center-to-center distance between snapping rolls - 39 to 41 inches.  
Adjusted by operator from tractor seat.

## GATHERER POINTS

Adjustable, hinged above gathering chains.  
Lift at hinge point - 27 to 30 inches.

## GATHERER CHAINS

Steel roller chain, 2 per snapping unit, enter gatherer throat opening 16 inches ahead of snapping roll points.  
Clearance between gatherer chains and ground - zero inches and up.

## ROW SPACING

Handle rows spaced - 38 to 44 inches.

## WAGON ELEVATOR

Size - 8 inches deep - 9 to 12-3/4 inches wide.  
Semi-automatic wagon elevator throw-out.  
Two cleaning fans.

## DIMENSIONS

Overall transport width - 8 feet, 4 inches.  
First elevator - 6-1/2 to 10 inches wide.

## SHIPPING WEIGHT

Picker with hook-up - 2950 lbs. (approximate).  
Snapper with hook-up - 2725 lbs. (approximate).

## CORN PICKER ONLY

### HUSKING ROLLS

Size - 8 inches diameter - 36 inches long.  
8 husking rolls (4 per row)  
Type - spiral--grooved and notched rubber rolls.  
Mating roll - smooth rubber.

### CORN SAVER

Auger type shelled corn saver.

## ATTACHMENTS

Radiator screens for tractor.  
Wagon elevator drive sprocket (19-tooth).  
Gatherer fender rods.  
Steel wagon box flare boards.  
No. 1 trash mover.  
Wood husking rolls.  
Tire carcass type husking rolls.  
Husking roll covers.  
Gatherer extensions.  
Wagon elevator extensions.  
Wagon elevator cover.  
Stalk lifter rods.  
Square steel flights for first elevator.  
Light support brackets.

*(Specifications and design subject to change without notice.)*

Thank you so much for reading.  
Please click the “Buy Now!”  
button below to download the  
complete manual.



After you pay.

You can download the most  
perfect and complete manual in  
the world immediately.

Our support email:

[ebooklibonline@outlook.com](mailto:ebooklibonline@outlook.com)