

3010 Row-Crop and Standard Gasoline Tractors



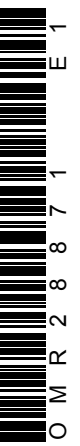
JOHN DEERE

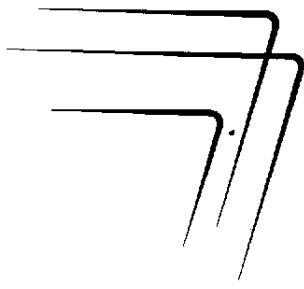
OPERATORS MANUAL 3010 Row-Crop and Standard Gasoline Tractors

OMR28871 E1 English

OMR28871 E1

LITHO IN U.S.A.
ENGLISH





a
**NEW
GENERATION
of power**

Your new John Deere Tractor is an entirely new concept of farm power. Developed through years of design and test, built to the traditionally high standards of John Deere, this versatile tractor meets the exacting requirements of modern farming.

New operating ease and comfort, hydraulic power when and where you need it, the ability to match engine power and transmission speed to any job, outstanding economy and dependability, modern styling, and simplicity of lubrication and service are all in this great new tractor.

We are confident this modern tractor, combined with equally advanced John Deere tools and implements, will help you to farm better, easier, and more profitably.

At the time the tractor was delivered, the John Deere dealer discussed with you its safe operation and proper care. However, before putting the tractor to work, read this manual. It contains complete instructions for operating the tractor, caring for it, and taking full advantage of its many time- and labor-saving features. After reading the manual, keep it in a convenient place for quick and easy reference if questions arise concerning operation, lubrication, or service.

The service policy which you received with your new tractor certifies that the tractor was properly inspected and prepared for delivery by your John Deere dealer. Keep this policy in a safe place and present it to the dealer whenever services which it authorizes are required.

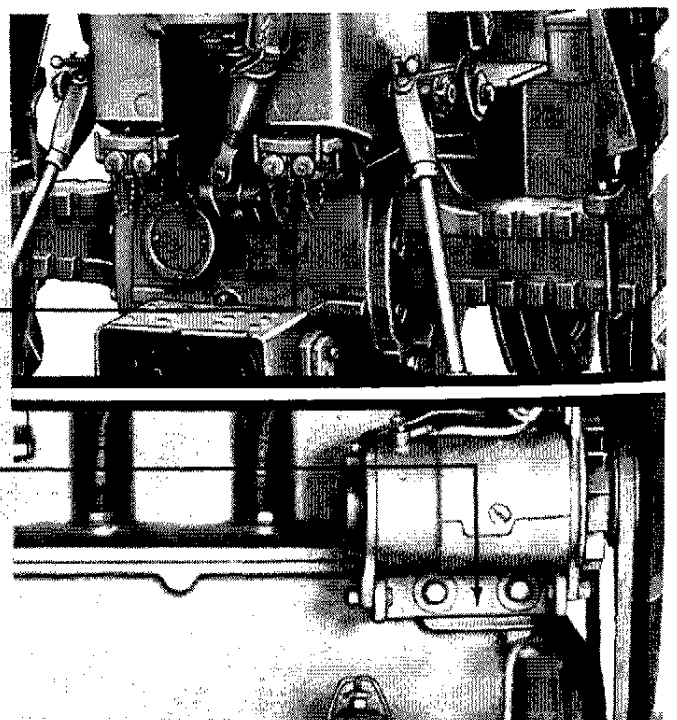
Your John Deere dealer wants to help you get the most value from your new tractor. His skilled servicemen can handle every job efficiently. These men are trained in modern service methods; they have all necessary tools and equipment. If new parts are needed, only genuine John Deere parts will be installed. These parts are exact duplicates of the originals, made from the same patterns and of the same high-quality materials.

When in need of new parts, be prepared to furnish your dealer with the engine serial number, the tractor chassis serial number, and the tractor model number. The location of the serial numbers is illustrated below. For ready reference, record the numbers in the spaces provided.

FILL IN THESE SPACES

CHASSIS SERIAL NUMBER

ENGINE SERIAL NUMBER





contents

<i>specifications</i>	2
<i>controls and instruments</i>	4
<i>operation</i>	9
<i>safety rules</i>	48
<i>fuels and lubricants</i>	50
<i>lubrication and periodic service</i>	54
<i>service</i>	64
<i>tractor storage</i>	82
<i>trouble shooting</i>	84
<i>attachments</i>	89
<i>index</i>	92



specifications

HORSEPOWER:*

PTO 55.09 h.p.
Drawbar 50.98 h.p.

ENGINE:

Type 4-cylinder, in-line, valve-in-head
Engine speeds:
Idle for engine shut-off 450 rpm
Normal slow idle 650 rpm
Working range 1500 to 2200 rpm
Max. transport speed 2500 rpm
Bore and stroke 4 in. x 4 in.
Displacement 201 cu. in.
Compression ratio 7.5 to 1
Firing order 1-3-4-2
Valve clearance 0.015 in. intake
0.028 in. exhaust

GROUND SPEEDS:**

1st 1-3/4 mph
2nd 2-1/2 mph
3rd 3-1/4 mph
4th 4-1/4 mph
5th 5-1/4 mph
6th 7 mph
7th 8-3/4 mph
8th 14-1/2 mph
3rd reverse 3-1/4 mph
5th reverse 5 mph
7th reverse 8-1/2 mph

CAPACITIES:

Fuel tank 29 U.S. gals.
Crankcase 8 U.S. qts.
Transmission-hydraulic system 9-1/2 U.S. gals.
Air cleaner 2-1/4 U.S. pints
Cooling system 16 U.S. qts.
Belt pulley 2-1/2 U.S. pints

CLUTCH: Single, 11-inch plate,
automotive-type, foot-operated

LUBRICATION SYSTEM: Force-feed pressurized
type with full-flow oil filter

FUEL SYSTEM:

Type Pressure system
Fuel pump Diaphragm type
Carburetor Single barrel, up-draft
Air cleaner Oil-wash type

COOLING SYSTEM:

Type Pressurized with centrifugal pump
Engine temperature control Heavy-duty thermostat

IGNITION SYSTEM:

Type Battery-distributor
Distributor point gap 0.022 in.
Distributor timing 20 degrees BTDC at 1900 rpm
Spark plugs:

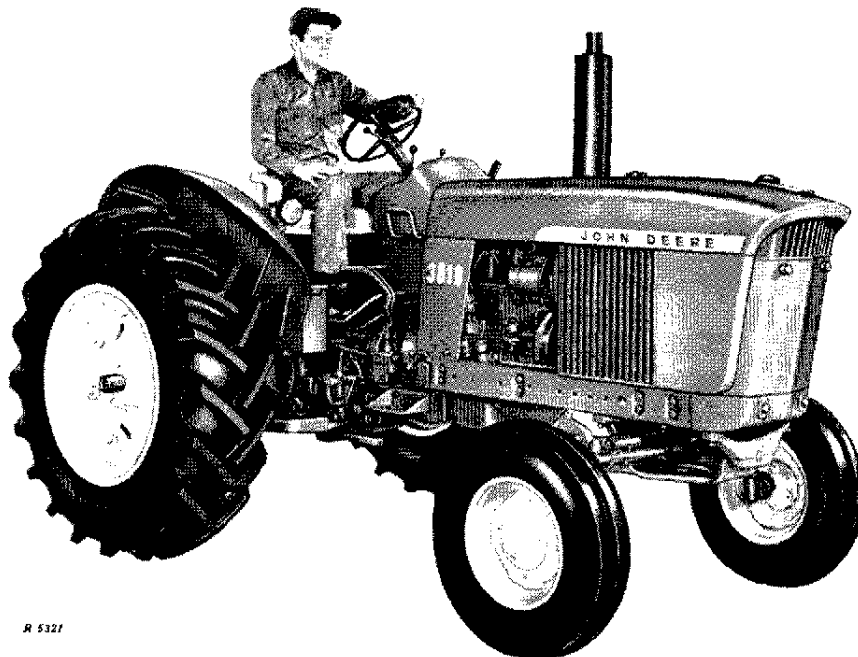
Size 18 mm.
Spark plug gap 0.025 in.

ELECTRICAL SYSTEM:

Starter, generator, lights, accessories 12 volts
Battery 70-amp. hr., SAE 3 EM agricultural type

*Maximum observed horsepower at 2200 engine rpm (Nebraska Test No. 763).

**Calculated at 1900 rpm engine speed only. For ground speeds at 1500 through 2500 rpm engine speeds, see page 14.



R 5321

John Deere 3010 Standard Gasoline Tractor

TRANSMISSION:

Type Syncro-Range, constant mesh
 Gear selections 8 forward and 3 reverse
 Shifting 4 stations, synchronized
 shifting within stations

HYDRAULIC SYSTEM:

Type Closed center, constant pressure. Includes power steering, power brakes, implement control, and transmission-differential lubrication

Maximum pressure 2250 psi

BRAKES: Hydraulically power actuated disk-type, operating in oil

POWER TAKE-OFF:

Type Independent, dual-speed PTO with front and rear power take-off. Rear stub shafts used for PTO speed conversion.

Speed (1900 engine rpm) Front- 1000 (See page 44)
 Rear - 540 or 1000

Rear PTO ahead of draw-bar hitch point 540 rpm - 14 in., 1000 rpm - 16 in.

PTO shaft above ground Row-Crop - 22-3/4 in.
 Standard - 21-7/8 in.

PTO CLUTCH: Single 10-in. plate, automotive type, hand-operated

BELT PULLEY (SPECIAL EQUIPMENT):

Diameter 12 in.

Width 8-1/2 in.

Engine speed 1900 rpm

Pulley speed 980 rpm

Belt speed 3077 fpm

FRONT TIRES:***

Row-Crop 6.00 - 14, 6-ply

Standard 6.00 - 16, 6-ply

Standard 7.50 - 16, 6-ply

REAR TIRES:***

Row-Crop 13.9 - 36, 6-ply

Standard 13.6 - 38, 6-ply

Standard 18.4 - 30, 6-ply

FRONT WHEEL TREAD: See pages 16 and 17.

REAR WHEEL TREAD:

Regular and offset wheels See page 18

Power-adjusted wheels. See page 21

DIMENSIONS:

Wheel base Row-Crop - 90 in.

Standard - 81-1/2 or 92-3/4 in.

Over-all length 138-1/2 in.

Over-all height Row-Crop - 86-5/8 in.

Standard - 85-1/2 in.

Height to steering wheel Row-Crop - 74-1/2 in.

Standard - 77-1/2 in.

Width (with regular axle) 86-5/8 in.

Turning radius Row-Crop - 103-1/2 in.

Standard - 110 in.

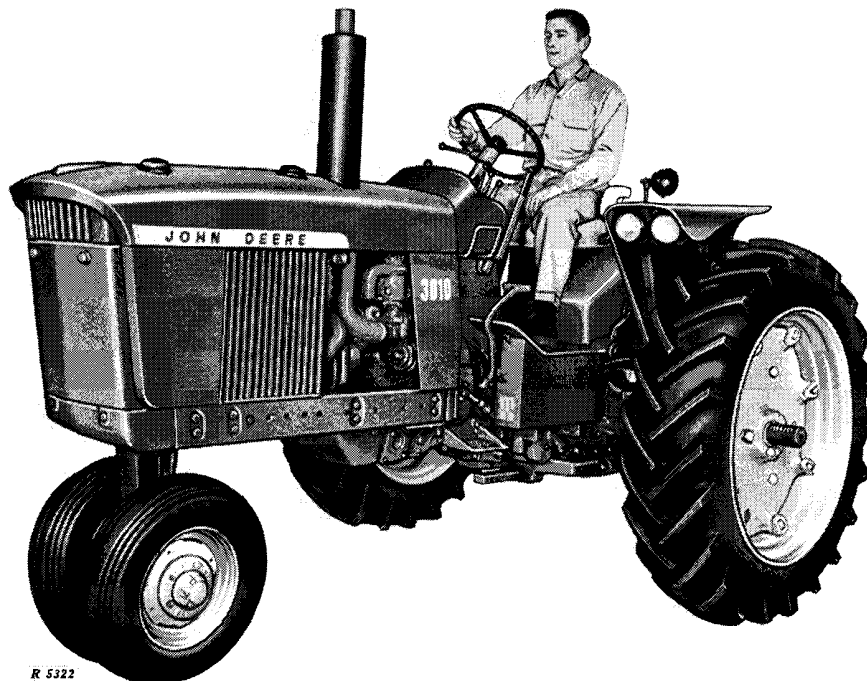
SHIPPING WEIGHT (with equipment for average field service, less fuel and ballast):

Row-Crop 6275 lbs.

Standard 6100 lbs.

***Additional tires available for special purposes.

(Specifications and design subject to change without notice.)



R 5322

John Deere 3010 Row-Crop Gasoline Tractor

Thank you so much for reading.
Please click the “Buy Now!”
button below to download the
complete manual.



After you pay.

You can download the most
perfect and complete manual in
the world immediately.

Our support email:

ebooklibonline@outlook.com