

4010 DIESEL AND GASOLINE WHEEL TRACTORS



JOHN DEERE

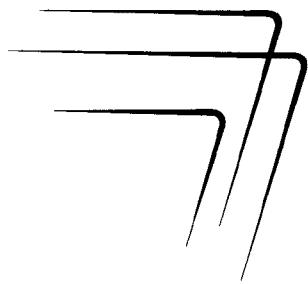
OPERATORS MANUAL 4010 DIESEL AND GASOLINE WHEEL TRACTORS

OMR30680 H1 English

OMR30680 H1

LITHO IN THE U.S.A.
ENGLISH





a
**NEW
GENERATION
of power**

Your new John Deere Tractor is an entirely new concept of power. Developed through years of design and test, built to the traditionally high standards of John Deere, this versatile tractor meets today's exacting requirements.

New operating ease and comfort, hydraulic power when and where you need it, the ability to match engine power and transmission speed to any job, outstanding economy and dependability, modern styling, and simplicity of lubrication and service are all in this great new tractor.

We are confident this modern tractor, combined with equally advanced John Deere equipment, will help you to do better work, easier and more profitably.

At the time the tractor was delivered, the John Deere dealer discussed with you its safe operation and proper care. However, before putting the tractor to work, read this manual. It contains complete instructions for operating the tractor, caring for it, and taking full advantage of its many time- and labor-saving features. After reading the manual, keep it in a convenient place for quick and easy reference if questions arise concerning operation, lubrication, or service.

The service policy which you received with your new tractor certifies that the tractor was properly inspected and prepared for delivery by your John Deere dealer. Keep this policy in a safe place and present it to the dealer whenever services which it authorizes are required.

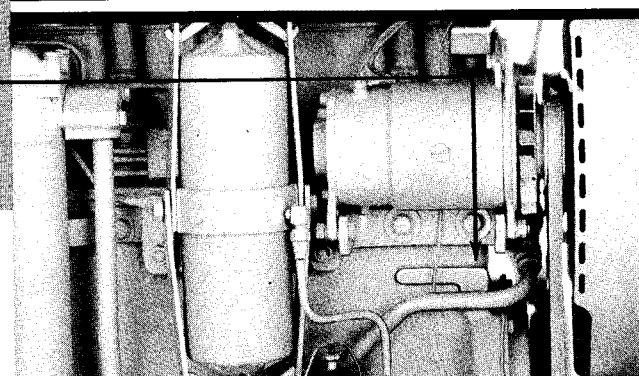
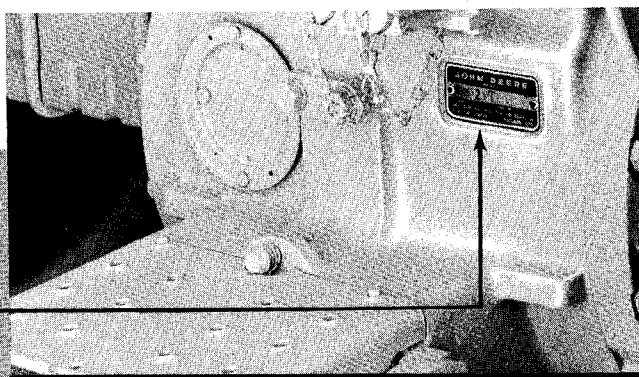
Your John Deere dealer wants to help you get the most value from your new tractor. His skilled servicemen can handle every job efficiently. These men are trained in modern service methods; they have all necessary tools and equipment. If new parts are needed, only genuine John Deere parts will be installed. These parts are exact duplicates of the originals, made from the same patterns and of the same high-quality materials.

When in need of new parts, be prepared to furnish your dealer with the engine serial number, the tractor chassis serial number, and the tractor model number. The location of the serial numbers is illustrated below. For ready reference, record the numbers in the spaces provided.

FILL IN THESE SPACES

CHASSIS SERIAL NUMBER

ENGINE SERIAL NUMBER





contents

| | |
|---|-----------|
| <i>specifications</i> | 2 |
| <i>controls and instruments</i> | 4 |
| <i>operation</i> | 7 |
| <i>safety rules</i> | 34 |
| <i>fuel and lubricants</i> | 36 |
| <i>lubrication and periodic service</i> | 40 |
| <i>service</i> | 51 |
| <i>tractor storage</i> | 67 |
| <i>trouble shooting</i> | 68 |
| <i>attachments</i> | 74 |
| <i>index</i> | 76 |



specifications

| | Diesel | Gasoline |
|---|------------|------------|
| HORSEPOWER (At 2200 engine rpm): | | |
| Flywheel (corrected)* | 94.10 h.p. | 92.08 h.p. |
| PTO (observed) | 84.00 h.p. | 80.96 h.p. |
| Drawbar (observed) | 73.65 h.p. | 72.77 h.p. |

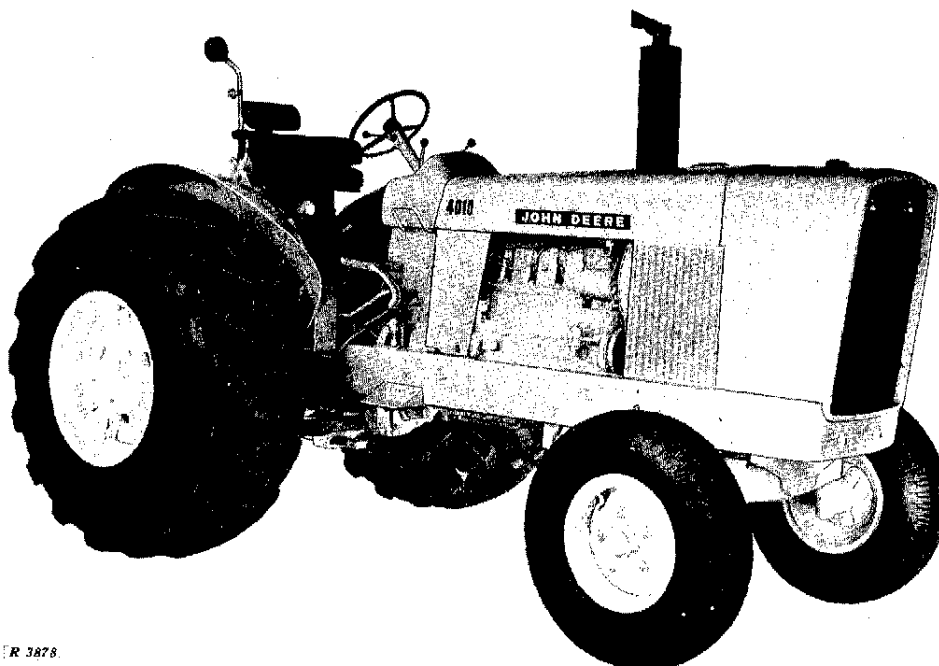
ENGINE:

| | | |
|-------------------------------|---|----------------------|
| Type | —————→ 6-cylinder, in-line, valve-in-head ←———— | |
| Engine speeds: | | |
| Idle for engine shutoff | | 450 rpm |
| Normal slow idle | 600 rpm | 650 rpm |
| Working speeds | 1500 to 2200 rpm | 1500 to 2200 rpm |
| Maximum transport speed | 2500 rpm | 2500 rpm |
| Bore and stroke | 4-1/8 in. x 4-3/4 in. | 4 in. x 4 in. |
| Displacement | 380 cu. in. | 302 cu. in. |
| Compression ratio | 16.5 to 1 | 7.5 to 1 |
| Firing order | 1-5-3-6-2-4 | 1-5-3-6-2-4 |
| Intake valve clearance | 0.018 in. | 0.015 in. |
| Exhaust valve clearance | 0.018 in. | 0.028 in. |
| Injection pump timing | 14° BTDC | |
| Distributor timing | | 20° BTDC at 1900 rpm |
| Distributor point gap | | 0.022 in. |
| Spark plug gap | | 0.025 in. |

ELECTRICAL SYSTEM:

| | | |
|---|---------------------------|----------|
| Starter, generator voltage | 24 volts | 12 volts |
| Lights, accessory voltage | 12 volts | 12 volts |
| 12-volt battery, 78-plate, 70 ampere-hour, SAE 3 EM type | Two (connected in series) | One |

**Factory corrected to standard sea level conditions (29.92 in. Hg. and 60° F.)*



R 3878

John Deere 4010 Gasoline Wheel Tractor

COOLING SYSTEM:

Type Pressurized with centrifugal pump
 Engine temperature control Heavy-duty thermostat

LUBRICATION SYSTEM: Force-feed pressurized type with full-flow oil filter

CAPACITIES:

Fuel tank 34 U.S. gals.
 Crankcase 8 U.S. qts.
 Hydraulic system 11 U.S. gals.
 Air cleaner Diesel—4-3/4 U.S. pints
 Gasoline—2-3/4 U.S. pints
 Cooling system Diesel—23 U.S. qts.
 Gasoline—24 U.S. qts.
 Belt pulley 2-1/2 U.S. pints

TRANSMISSION:

Type Collar shift, constant mesh
 Gear selections 8 forward and 3 reverse
 Shifting 4 stations, right- or left-hand shifting in each station

GROUND SPEEDS:**

1st 1.7 mph
 2nd 2.7 mph
 3rd 3.6 mph
 4th 4.7 mph
 5th 5.8 mph
 6th 7.6 mph
 7th 9.8 mph
 8th 16.1 mph
 3rd reverse 3.5 mph
 5th reverse 5.6 mph
 7th reverse 9.6 mph

***Calculated at 2200 rpm engine speed with 18.00-26 tires. For ground speeds at 1500 through 2500 rpm engine speeds, see page 12.*

POWER TAKE-OFF:

Type Independent dual speed PTO with front and rear power take-off. Stub shafts used for PTO rear conversion
 Speed (1900 engine rpm) Front—1000 rpm (see page 30)
 Rear—540 or 1000 rpm

HYDRAULIC SYSTEM:

Type Closed center, constant pressure. Includes power steering, power brakes, equipment control, and transmission-differential lubrication
 Maximum pressure 2250 psi

BRAKES:

. Hydraulically power actuated, disk-type, operating in oil

FRONT TIRES:

Size 7.50-18, 6-ply

REAR TIRES:

Size 18.00-26, 10-ply
 (Additional size tires available for special requirements.)

FRONT WHEEL TREAD:

. 64 in.

REAR WHEEL TREAD:

18.00-26 tires 70 in.
 (For tread widths with other size tires, see page 15.)

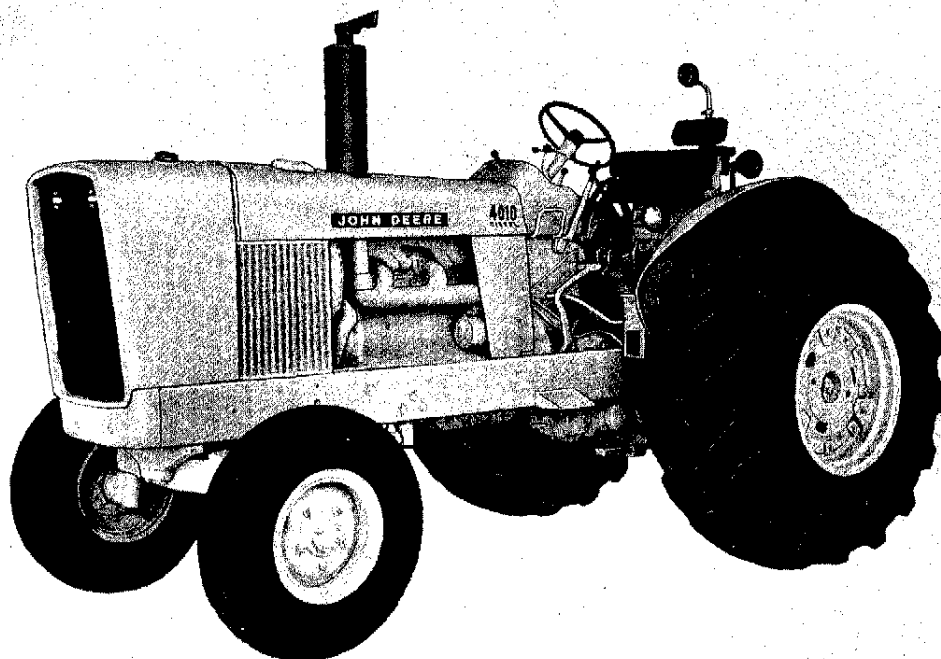
DIMENSIONS:

Wheel base 96-3/8 in.
 Over-all length 149 in.
 Over-all height 87-7/8 in.
 Width 94 in.
 Turning radius 164 in.

SHIPPING WEIGHT:

. Gasoline—8126 lbs.
 Diesel—8426 lbs.

Specifications and design subject to change without notice.



R 3879

John Deere 4010 Diesel Wheel Tractor

Thank you so much for reading.
Please click the “Buy Now!”
button below to download the
complete manual.



After you pay.

You can download the most
perfect and complete manual in
the world immediately.

Our support email:

ebooklibonline@outlook.com