



JD 600 TRACTORS

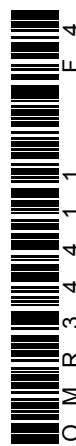


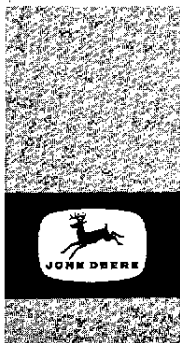
OPERATORS MANUAL JD 600 TRACTORS

OMR34411 F4 English

OMR34411 F4

LITHO IN THE U.S.A.
ENGLISH





TO THE PURCHASER

Your new John Deere JD600 Tractor is an entirely new concept of power. Built to the traditionally high standards of John Deere, this versatile tractor meets today's exacting requirements.

Outstanding ease of operation, the ability to match engine power and speed to the job, operating comfort, hydraulic power when and where you need it, simplicity of lubrication and service, modern styling, and economical, dependable service are all features of this great tractor.

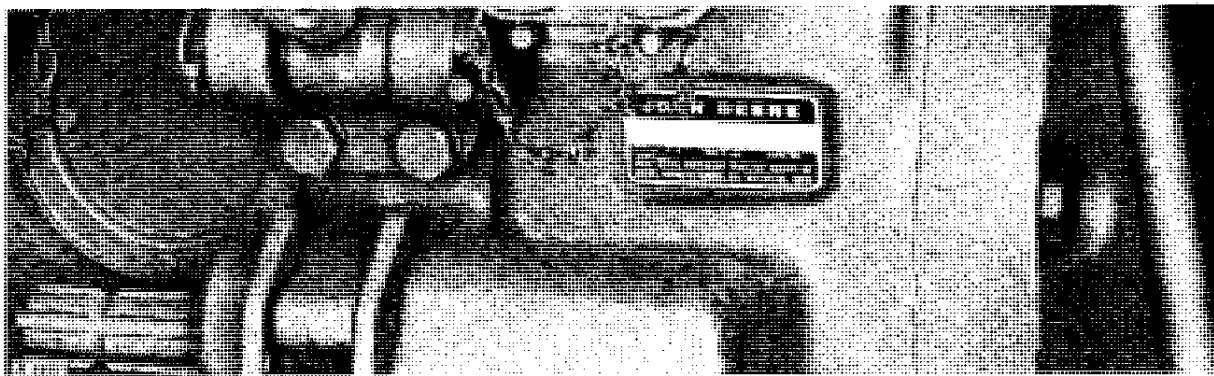
At the time the tractor was delivered, the John Deere dealer discussed with you its safe operation and proper care. However, before putting the tractor to work, read this manual. It contains complete instructions for operating the tractor, caring for it, and taking advantage of its many time- and labor-saving features. After reading this manual, keep it in a convenient place together with the tractor parts list and any equipment operator's manual and parts list that are used with the tractor. This will assure you quick and easy reference if questions arise concerning operation, lubrication, or service.

References to the right or left side of the tractor are as viewed from behind the tractor.

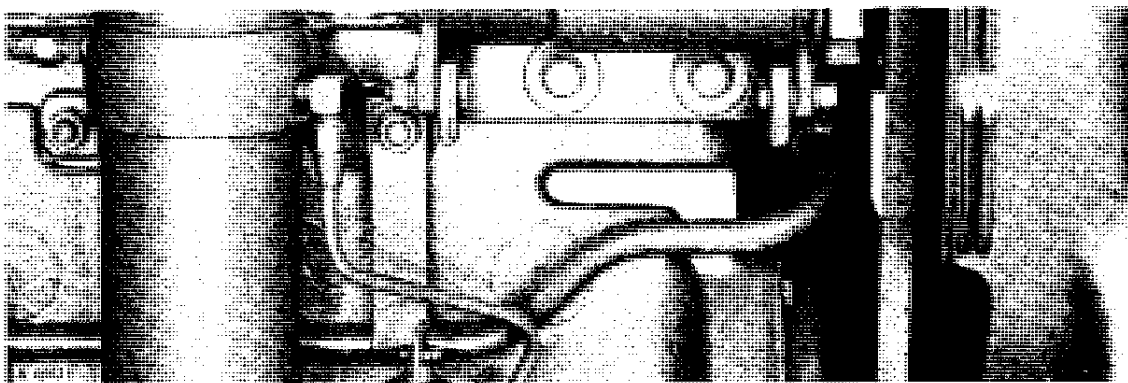
The service policy which you received with your tractor certifies that the tractor was properly inspected and prepared for delivery by your John Deere dealer. Keep this policy in a safe place and present it to the dealer whenever services which it authorizes are required.

Your John Deere dealer wants to help you get the most value from your tractor. His skilled servicemen can handle every job efficiently. These men are trained in modern service methods; they have all necessary tools and equipment. If new parts are needed, only genuine John Deere parts will be installed. These parts are exact duplicates of the originals, made from the same patterns and of the same high-quality materials.

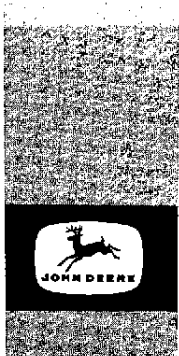
When in need of new parts, be prepared to furnish your dealer with the engine serial number, the tractor chassis serial number, and the tractor series number. For ready reference, locate and record the serial numbers in the spaces provided in the following illustrations.



Record Tractor Chassis Serial Number

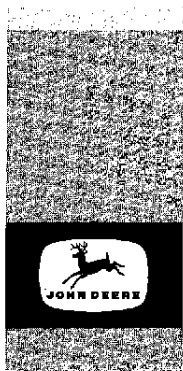


Record Engine Serial Number



CONTENTS

SPECIFICATIONS	2
CONTROLS AND INSTRUMENTS	4
OPERATION	5
SAFETY RULES	32
FUELS AND LUBRICANTS	34
LUBRICATION AND PERIODIC SERVICE .	38
SERVICE	48
TRACTOR STORAGE	65
TROUBLE SHOOTING	66
INDEX	71



SPECIFICATIONS

Diesel

Gasoline

HORSEPOWER (at 2200 rpm)

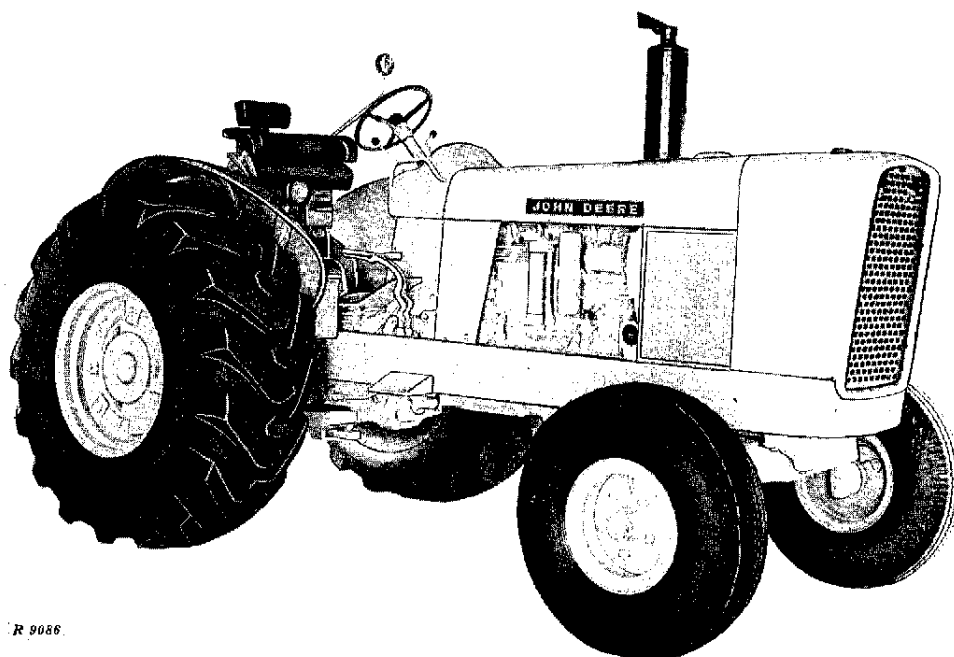
Observed net engine flywheel	101.2 h.p.	103.5 h.p.
--	------------	------------

ENGINE:

Type	6-cylinder, in-line, valve-in-head	
Engine speeds:		
Idle for engine shut-off	420 rpm
Normal slow idle	600 rpm	650 rpm
Working speeds	1500 to 2200 rpm	1500 to 2200 rpm
Maximum transport speed	2500 rpm	2500 rpm
Bore and stroke	4-1/4 in. x 4-3/4 in.	4-1/4 in. x 4 in.
Displacement	404 cu. in.	340 cu. in.
Compression ratio	16.5 to 1	7.6 to 1
Firing order	1-5-3-6-2-4	1-5-3-6-2-4
Intake valve clearance	0.018 in.	0.015 in.
Exhaust valve clearance	0.018 in.	0.028 in.
Injection pump timing	TDC
Distributor timing	20° BTDC at 2000 rpm
Distributor point gap	0.016 in.
Spark plug gap	0.025 in.

ELECTRICAL SYSTEM:

Starter, generator voltage	24 volts	12 volts
Lights, accessory voltage	12 volts	12 volts
12-volt battery, 78-plate, 75 ampere-hour	Two (connected in series)	One



R 9086

John Deere JD600 Tractor with Diesel Engine and Power Shift Transmission

COOLING SYSTEM:

Type Pressurized with centrifugal pump
Engine temperature control . . Heavy-duty thermostats

LUBRICATION SYSTEM: Force-feed pressurized type with full-flow oil filter

CAPACITIES (Tractor Only):

Cooling system 24 U.S. qts.
Fuel tank 34 U.S. gals.
Engine crankcase Dry system - 9 U.S. qts.
At service intervals - 8 U.S. qts.
Transmission-hydraulic system:
Collar Shift Dry system - 13 U.S. gals.
At service intervals - 10 U.S. gals.
Power Shift Dry system - 17 U.S. gals.
At service intervals - 14 U.S. gals.
Air cleaner Diesel - 4-3/4 U.S. pts.
Gasoline - 2-3/4 U.S. pts.
Belt Pulley 2-1/2 U.S. pts.

COLLAR SHIFT TRANSMISSION:

Type Collar shift, constant mesh
Gear selections 8 forward and 2 reverse
Shifting 4 stations, right- or left-hand shifting in each station

POWER SHIFT TRANSMISSION:

Type Planetary gears, hydraulically actuated wet disk clutches and brakes
Gear selections 8 forward and 4 reverse
Shifting Hydraulic powershifting controlled by right-hand speed selector and left-hand reverser lever

GROUND SPEEDS: See page 11

POWER TAKE-OFF:

Type Independent PTO with front and rear power take-off. Stub shaft used for rear dual speed PTO conversion.
Speed (1900 engine rpm) Front - 1000 rpm
Dual speed rear - 540 or 1000 rpm
Single speed rear - 1000 rpm

HYDRAULIC SYSTEM:

Type Closed center, constant pressure. Includes power steering, power brakes, and equipment control
Maximum pressure 2250 psi

BRAKES: Hydraulically power actuated, disk-type, operating in oil

FRONT TIRES:** 9.00-15, 10-ply

REAR TIRES:** 18.00-28, 10-ply

FRONT WHEEL TREAD: 64 in.

REAR WHEEL TREAD: 70 in.
(For tread widths with other size tires, see page 63)

DIMENSIONS:

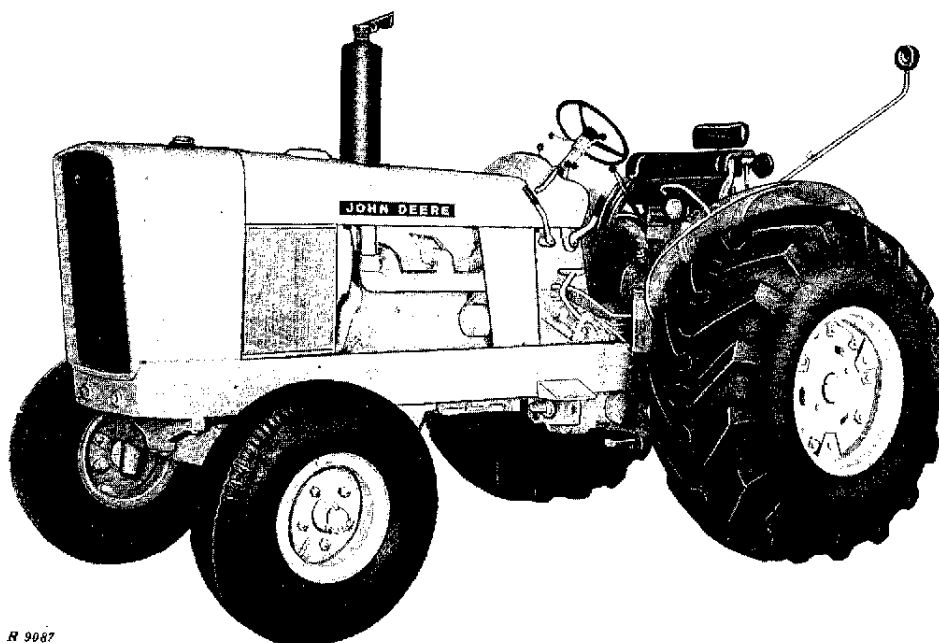
Wheel base 97 in.
Over-all length 149-1/2 in.
Over-all height 89 in.
Width 94 in.
Turning radius 163 in.

SHIPPING WEIGHT (Collar Shift Tractors equipped for average service, less fuel and ballast. Add 375 pounds if tractor has Power Shift transmission):

Diesel - 9185 lbs. Gasoline - 8895 lbs.

****Additional tire sizes available for special purposes.**

Specifications and design subject to change without notice.



R 9087

John Deere JD600 Tractor with Diesel Engine and Power Shift Transmission

Thank you so much for reading.
Please click the “Buy Now!”
button below to download the
complete manual.



After you pay.

You can download the most
perfect and complete manual in
the world immediately.

Our support email:

ebooklibonline@outlook.com