

5010-I Tractor (Prior to Serial No. 8000)



JOHN DEERE

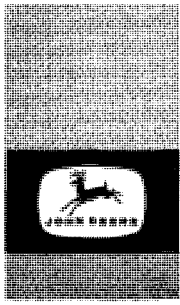
OPERATORS MANUAL 5010-I Tractor (Prior to Serial No. 8000)

OMR36640 I5 English

OMR36640 I5

LITHO IN U.S.A.
ENGLISH





TO THE PURCHASER

Your new John Deere 5010-I Tractor is an entirely new concept of power. Built to the traditionally high standards of John Deere, this versatile tractor meets today's exacting requirements.

Outstanding ease of operation, the ability to match engine power and speed to the job, operating comfort, hydraulic power when and where you need it, simplicity of lubrication and service, modern styling, and economical, dependable service are all features of this great tractor.

At the time the tractor was delivered, the John Deere dealer discussed with you its safe operation and proper care. However, before putting the tractor to work, read this manual. It contains complete instructions for operating the

tractor, caring for it, and taking advantage of its many time and labor saving features. After reading this manual, keep it in a convenient place together with the tractor parts list and any equipment operator's manual and parts list that are used with the tractor. This will assure you quick and easy reference if questions arise concerning operation, lubrication, or service.

References to the right or left side of the tractor are as viewed from behind the tractor.

The service policy which you received with your tractor certifies that the tractor was properly inspected and prepared for delivery by your John Deere dealer. Keep this policy in a safe place and present it to the dealer whenever services which it authorizes are required.

CONTENTS

SPECIFICATIONS	2	LUBRICATION AND PERIODIC SERVICE	23
CONTROLS AND INSTRUMENTS	4	SERVICE	32
OPERATION	5	TRACTOR STORAGE	45
SAFETY RULES	18	TROUBLE SHOOTING	46
FUELS AND LUBRICANTS	20	INDEX	52

PARTS AND SERVICE

Your John Deere dealer wants to help you get the most value from your tractor. His skilled servicemen can handle every job efficiently. These men are trained in modern service methods; they have all necessary tools and equipment. If new parts are needed, only genuine John Deere parts will be installed. These parts are exact

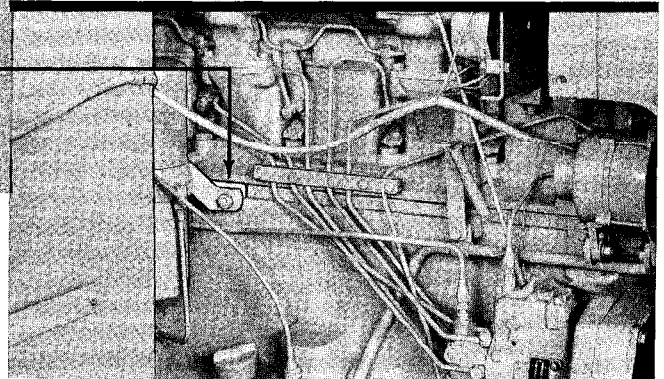
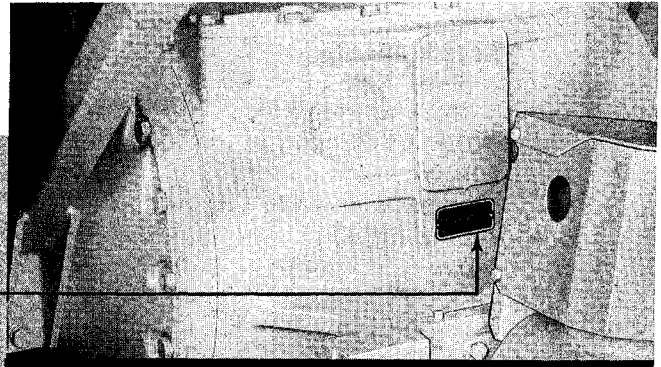
duplicates of the originals, made from the same patterns and of the same high-quality materials.

When in need of new parts, be prepared to furnish your dealer with the tractor series number and the serial numbers shown in the illustrations below. For ready reference, record the numbers in the spaces provided.

FILL IN THESE SPACES

CHASSIS SERIAL NUMBER

ENGINE SERIAL NUMBER





SPECIFICATIONS

HORSEPOWER (Maximum observed at 2200 engine rpm):

Flywheel	127.01
PTO*	121.12
Drawbar*	108.91

ENGINE

Type 6-cylinder, in-line, valve-in-head, 4-stroke-cycle

Engine speeds:

Slow idle	600 rpm
Working range	1500 to 2200 rpm
Bore and stroke	4-3/4 x 5 in.
Displacement	531 cu. in.
Compression ratio	16 to 1
Firing order	1-5-3-6-2-4
Valve clearance	intake . . . 0.015 in.
	exhaust . . . 0.022 in.
Injection pump timing	TDC

COOLING SYSTEM

Type . . . Pressurized with centrifugal pump
 Engine temperature control . . 2 thermostats

LUBRICATION SYSTEM: . . Force-feed, pressurized, with full-flow oil filter

FUEL SYSTEM

Type Direct injection
 Injection pump Inlet metering distributing-type
 Air cleaner Dry type

ELECTRICAL SYSTEM

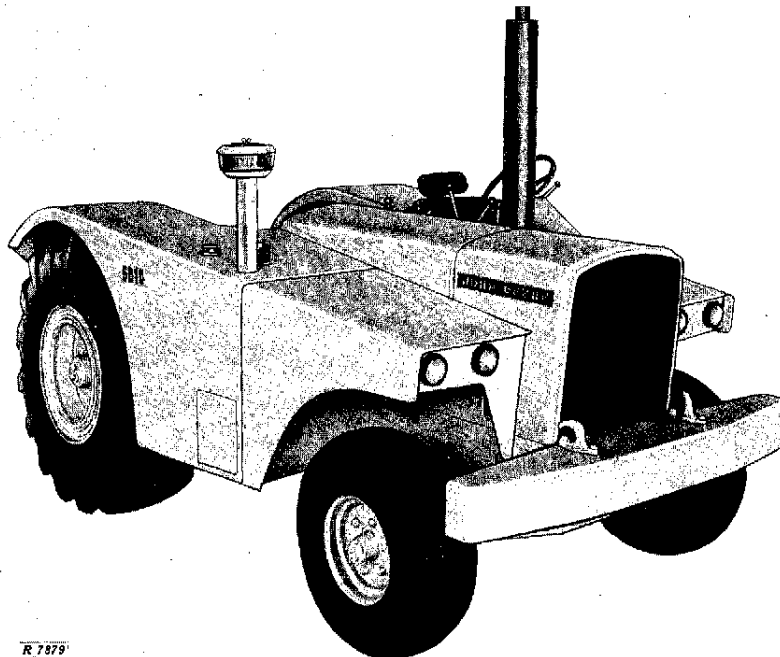
Charging system . . . 24-volt with self-rectifying alternator and transistorized regulator
 Starter, lights, alternator voltage . . 24-volt
 Accessory voltage 12-volt
 Batteries . . . Four 6-volt, 51 plate, 115 ampere-hour, tractor-type, connected in series

CLUTCH. Two 11-in. dry plates, hydraulic assist, foot-operated

TRANSMISSION

Type Syncro-range, constant mesh
 Gear selections . . . 8 forward and 3 reverse

*Nebraska Test No. 828



R 7879

John Deere 5010-1 Tractor

GROUND SPEEDS (Calculated at 1900 engine rpm with 18.00-25 tires)

1st	2.2 mph
2nd	3.5 mph
3rd	4.6 mph
4th	6.0 mph
5th	7.4 mph
6th	9.7 mph
7th	12.6 mph
8th	20.6 mph
3rd Rev.	4.5 mph
5th Rev.	7.2 mph
7th Rev.	12.3 mph

Maximum transport speed 26.1 mph at 2400 engine rpm (fast idle speed).

CAPACITIES

Fuel tank	49 U.S. gals.
Crankcase:	
When lubrication system is dry	13-1/2 U.S. qts.
At service intervals	12 U.S. qts.
Hydraulic system:	
When system is dry	17 U.S. gals.
At service intervals	16 U.S. gals.
Cooling system	40 U.S. qts.

POWER TAKE-OFF . Independent, constant running, with mechanical disconnect. Vertical or 1000 rpm horizontal PTO shaft.

Specifications and design subject to change without notice.

PTO CLUTCH Hand-operated, wet multiple-disk, hydraulically actuated

HYDRAULIC SYSTEM

Type . . . Closed center, constant pressure; includes power steering, power brakes, equipment control, and transmission-differential lubrication

Maximum pressure 2250 psi

BRAKES:

Tractor . . . Foot-operated, wet-disk type, hydraulically actuated.

Scraper Hand-operated power brakes

TIRES (additional sizes available for special requirements)

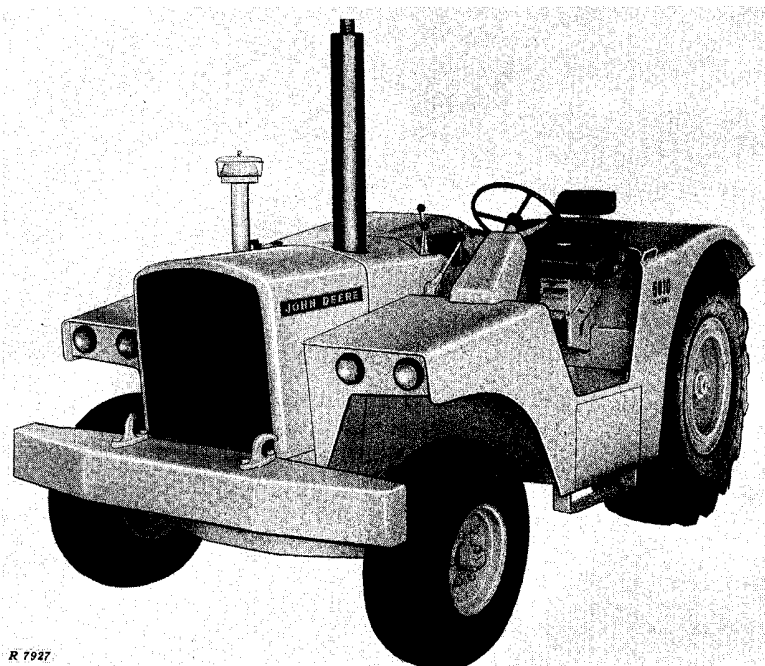
Front	11.00-16, 12 ply
Rear	18.00-25, 12 ply

DIMENSIONS

Wheel base	96 in.
Over-all length	157-1/8 in.
Over-all height	105-1/4 in.
Over-all width	95-3/4 in.
Front wheel tread	69 in.
Rear wheel tread	72 in.
Turning radius	145-1/2 in.

SHIPPING WEIGHT

(less fuel and ballast) 13,030 lbs.



R 7927

John Deere 5010-1 Tractor

Thank you so much for reading.
Please click the “Buy Now!”
button below to download the
complete manual.



After you pay.

You can download the most
perfect and complete manual in
the world immediately.

Our support email:

ebooklibonline@outlook.com