

1020 AND 2020 TRACTORS



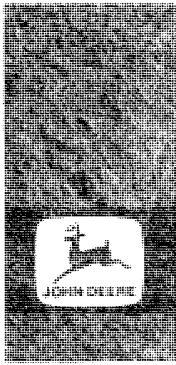
OPERATORS MANUAL 1020 AND 2020 TRACTORS

OMR48388 H0 English

JOHN DEERE TRACTOR WORKS
OMR48388 H0

LITHO IN THE U.S.A.
ENGLISH






TO THE OPERATOR

Your versatile new John Deere Tractor meets the exacting requirements of modern farming.

Operating ease and comfort, hydraulic power when and where you need it, the ability to match engine power and transmission speed to any job, outstanding economy and dependability, modern styling, and simplicity of lubrication and service are all special features of this great tractor.

We are confident this modern tractor, combined with equally advanced John Deere tools and implements, will help you to farm better, easier, and more profitably.

 This safety alert symbol identifies important safety messages in this manual. When you see this symbol, be alert to the possibility of personal injury and carefully read the message that follows.

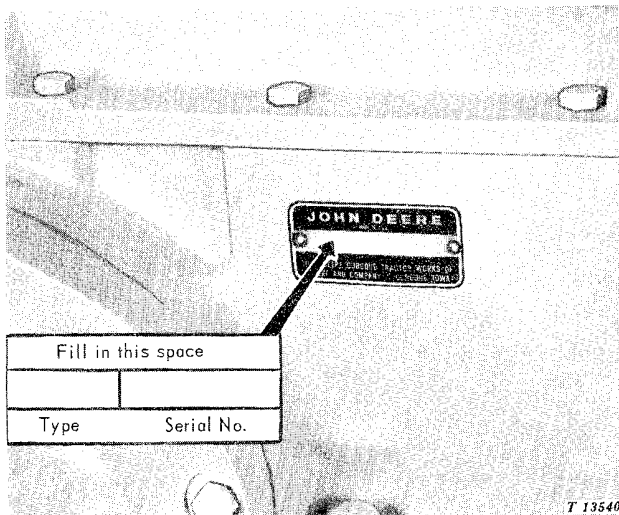
At the time the tractor was delivered, the John Deere dealer discussed with you its safe operation and proper care. However, before putting the tractor to work, read this manual. It contains complete instructions for operating the tractor, caring for it, and taking full advantage of its many time- and labor-saving features. After

reading the manual, keep it in a convenient place for quick and easy reference if questions arise concerning operation, lubrication, or service.

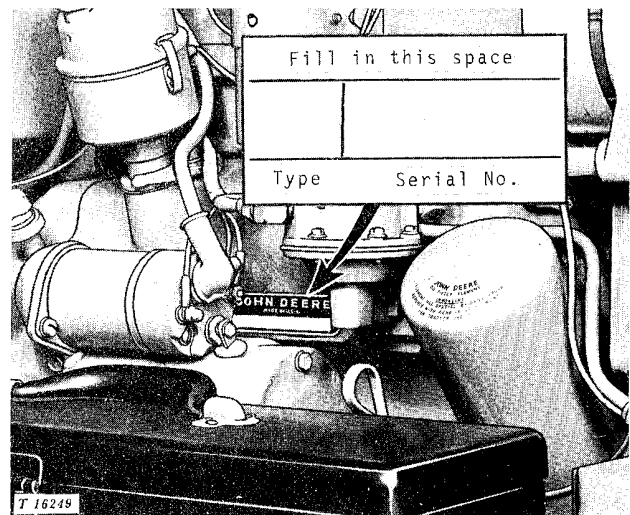
The warranty on this tractor appears on your copy of the purchase order which you should have received from your dealer when you purchased the tractor.

Your John Deere dealer wants to help you get the most value from your tractor. His skilled servicemen can handle every job efficiently. These men are trained in modern service methods and they have all necessary tools and equipment. If new parts are needed, only genuine John Deere parts will be installed. These parts are exact duplicates of the originals, made from the same patterns and of the same high-quality materials.

When in need of new parts, be prepared to furnish your dealer with the tractor type, complete tractor chassis serial number, engine type, and complete engine serial number. For ready reference, locate and record the above information in the spaces provided in the illustrations below.



Tractor Serial No.

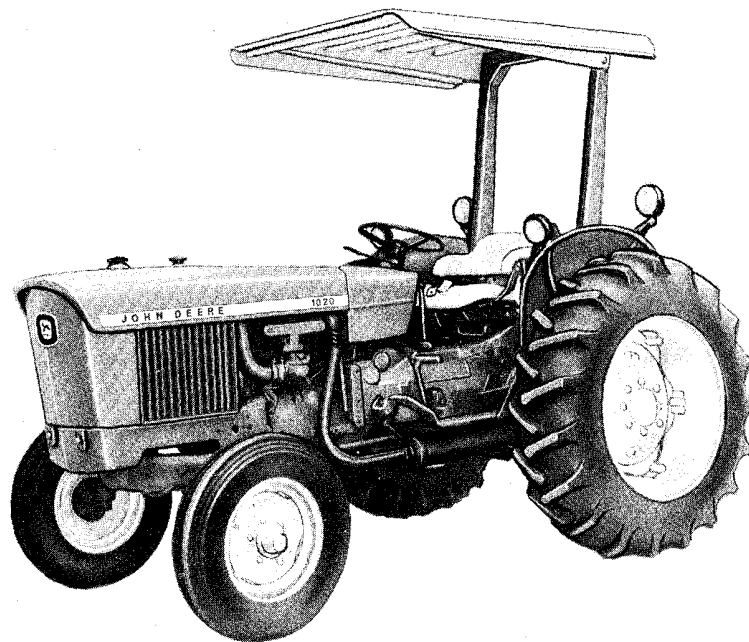


Engine Serial No.



CONTENTS

	Page
SPECIFICATIONS	2
CONTROLS AND INSTRUMENTS	4
OPERATION	5
SAFETY RULES	39
FUELS AND LUBRICANTS	40
LUBRICATION AND PERIODIC SERVICE	42
SERVICE	54
TRACTOR STORAGE	71
TROUBLE SHOOTING	72
INDEX	78



R 17306

*John Deere 1020 RU Tractor Equipped with Underneath Exhaust
and Roll-Gard with Canopy*



SPECIFICATIONS

	1020 Series		2020 Series	
	Gasoline	Diesel	Gasoline	Diesel
HORSEPOWER (Official Tests)				
Maximum drawbar horsepower	32.74	32.67	45.45	47.39
Maximum PTO horsepower	38.82	38.92	53.91	54.09
ENGINE				
Number of cylinders	3	3	4	4
Bore and stroke, inches.	3.86 x 3.86	3.86 x 4.33	3.86 x 3.86	3.86 x 4.33
Displacement in cubic inches.	135.0	152.0	180.0	202.0
Compression ratio.	7.5 to 1	16.3 to 1	7.5 to 1	16.3 to 1
Firing order.	1-2-3	1-2-3	1-3-4-2	1-3-4-2
N.A.C.C. or A.M.A. horsepower rating for tax purposes.	17.88	17.88	23.84	23.84
Intake valve clearance	0.014-inch	0.014-inch	0.014-inch	0.014-inch
Exhaust valve clearance.	0.022-inch	0.018-inch	0.022-inch	0.018-inch
Slow idle	600 rpm	800 rpm	600 rpm	800 rpm
Fast idle	2680 rpm	2650 rpm	2680 rpm	2650 rpm
Working speed range	1500 to 2500 rpm	1500 to 2500 rpm	1500 to 2500 rpm	1500 to 2500 rpm
CAPACITIES (U.S. Standard Measures)				
Fuel tank.	16-1/2 gals.		19-1/2 gals.	
Cooling system.	11 qts.		12 qts.	
Crankcase (including filter).	6 qts.		6 qts.	
Transmission-hydraulic system.	10 gals.		10 gals.	
Air cleaner (oil-bath type)	1 qt.		1 qt.	
Belt pulley.	2-1/2 pts.		2-1/2 pts.	
DIFFERENTIAL AND FINAL DRIVES		HYDRAULIC SYSTEM		
Type	Planetary reduction final drives with spi- ral bevel gear drive differential.		Type	Closed center, constant pressure.
Differential lock	Hand or foot operated mechanical lock spring-loaded out of engagement.		Standby oil pressure	2250 psi
POWER TAKE-OFF		BRAKES		
Type	Continuous-running, trans- mission-driven or indepen- dent PTO types available in 540 and/or 1000 rpm options. See page 35 for details.		Hydraulically actuated, wet-disk type.	
		ELECTRICAL SYSTEM		
		Battery (dry) voltage 12 volts		
		Battery specific gravity at full charge (corrected to 80° F.) 1.260		
		Battery terminal grounded negative		
		CLUTCH.		
		Single or dual stage, spring-loaded, dry disk, foot-operated		

TRANSMISSION

Type Collar Shift
 Gear selections . . . 8 forward and 4 reverse
 Shifting 4 speeds each in high,
 low, and reverse ranges.
 Park lock included.

FRONT TIRES:* 9.00-10
 6.00-16
 7.50-16

REAR TIRES:* 18.4-16.1
 12.4-24
 14.9-28
 12.4-36
 13.6-38

OPTIONAL REVERSER

Hydraulic wet clutches, no clutching required.

OPTIONAL HI-LO SHIFT UNIT

Hydraulic wet clutches, no clutching required.

REAR WHEEL TREAD See page 14.

FRONT WHEEL TREAD See page 13.

**Additional tire sizes available.*

TRAVEL SPEEDS, MPH (With Zero Slip)

NOTE: The travel speeds shown are for RU tractors with 13.6 - 28 rear tires, HU tractors with 13.9 - 36 rear tires, and LU tractors with 12.4 - 24 rear tires. On tractors with the Hi-Lo Shift option, high range speeds are the same as listed in the chart below. Low range speeds are 25.8 percent less than those listed. If tractor is equipped with a reverser, multiply forward speeds by 1.16 to obtain true reverse speeds.

Gear	1500 rpm			2100 rpm*			2500 rpm		
	RU	HU	LU	RU	HU	LU	RU	HU	LU
1st	.8	.9	.8	1.2	1.2	1.1	1.4	1.5	1.3
2nd	1.2	1.3	1.1	1.7	1.8	1.5	2.0	2.1	1.8
3rd	1.8	1.9	1.6	2.5	2.6	2.2	3.0	3.1	2.7
4th	2.5	2.6	2.2	3.5	3.7	3.1	4.2	4.4	3.7
5th	3.4	3.5	3.0	4.5	4.9	4.2	5.6	5.9	5.0
6th	4.8	5.0	4.2	6.7	7.0	5.9	8.0	8.4	7.1
7th	7.2	7.4	6.2	10.1	10.4	8.4	11.9	12.4	10.5
8th	10.0	10.4	8.8	14.0	14.6	12.6	16.6	17.3	14.7
R1	1.0	1.0	.9	1.4	1.5	1.2	1.7	1.7	1.5
R2	1.4	1.5	1.3	2.0	2.1	1.8	2.4	2.5	2.1
R3	2.1	2.2	1.9	2.8	3.1	2.6	3.5	3.7	3.1
R4	2.9	3.1	2.7	4.1	4.3	3.7	4.9	5.1	4.4

**2100 engine rpm gives the SAE rated 540 or 1000 rpm PTO speed. Some PTO-driven machines are operated at other speeds. See the machine operator's manual for detailed instructions.*

DIMENSIONS

	1020 RU Tractors	1020 HU Tractors	1020 LU Tractors	2020 RU Tractors	2020 HU Tractors	2020 LU Tractors
Height to top of hood	51-3/16 in.	55-13/16 in.	49 in.	56-3/4 in.	59 in.	54 in.
Clearance (front axle)	20-1/4 in.	23-15/16 in.	16-15/16 in.	20-3/8 in.	24-1/8 in.	17-15/16 in.
Over-all height	76-7/16 in.	80-15/16 in.	74-3/16 in.	82 in.	84-1/4 in.	78-3/16 in.
(LU Low Profile Orchard option)			49-1/4 in.			52-1/4 in.
Over-all width, min.	63-1/16 in.	67-1/4 in.	51-3/16 in.	65-5/8 in.	67-7/8 in.	58-1/8 in.
Over-all length						
(with 3-point hitch)	126 in.	126 in.	126 in.	131-1/2 in.	131-1/2 in.	131-1/2 in.
Wheelbase (maximum)						
(straight axle)	80-11/16 in.	80-11/16 in.		85-3/4 in.	85-3/4 in.	
(sweptback axle)	74-3/8 in.		75 in.	79-3/8 in.		80 in.
Turning radius (with brakes applied)						
(straight axle)	128 in.	128 in.		133 in.	132-1/8 in.	
(sweptback axle)	122 in.		120 in.	127 in.		121 in.
Shipping weight (approx.)						
(gasoline)	4100 lbs.	4700 lbs.	3790 lbs.	4565 lbs.	4850 lbs.	4060 lbs.
(diesel)	4150 lbs.	4750 lbs.	3840 lbs.	4645 lbs.	4930 lbs.	4140 lbs.

(Specifications and design subject to change without notice.)

Thank you so much for reading.
Please click the “Buy Now!”
button below to download the
complete manual.



After you pay.

You can download the most
perfect and complete manual in
the world immediately.

Our support email:

ebooklibonline@outlook.com