

John Deere 1520 Tractor



JOHN DEERE

OPERATORS MANUAL

John Deere 1520
Tractor

OMR48389 H0 English

John Deere Tractor Works
OMR48389 H0

LITHO IN U.S.A.
ENGLISH



TO THE PURCHASER

Your versatile new John Deere Tractor meets the exacting requirements of modern farming.

Operating ease and comfort, hydraulic power when and where you need it, the ability to match engine power and transmission speed to any job, outstanding economy and dependability, modern styling, and simplicity of lubrication and service are all special features of this great tractor.

We are confident this modern tractor, combined with equally advanced John Deere tools and implements, will help you to farm better, easier, and more profitably.

! This safety alert symbol identifies important safety messages in this manual. When you see this symbol, be alert to the possibility of personal injury and carefully read the message that follows.

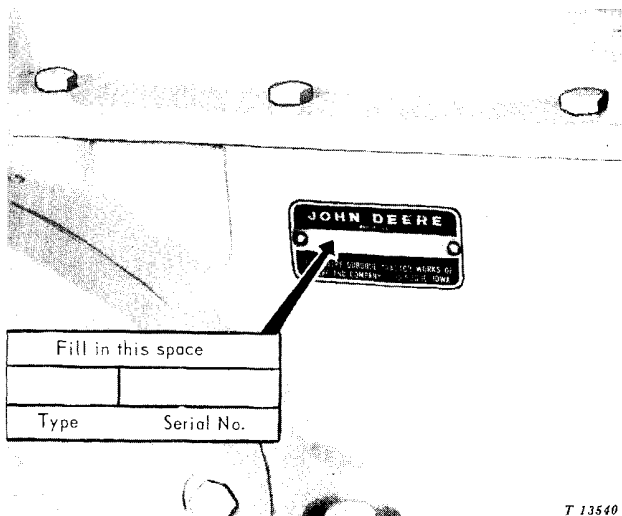
At the time the tractor was delivered, the John Deere dealer discussed with you its safe operation and proper care. However, before putting the tractor to work, read this manual. It contains complete instructions for operating the tractor, caring for it, and taking full advantage of its

many time- and labor-saving features. After reading the manual, keep it in a convenient place for quick and easy reference if questions arise concerning operation, lubrication, or service.

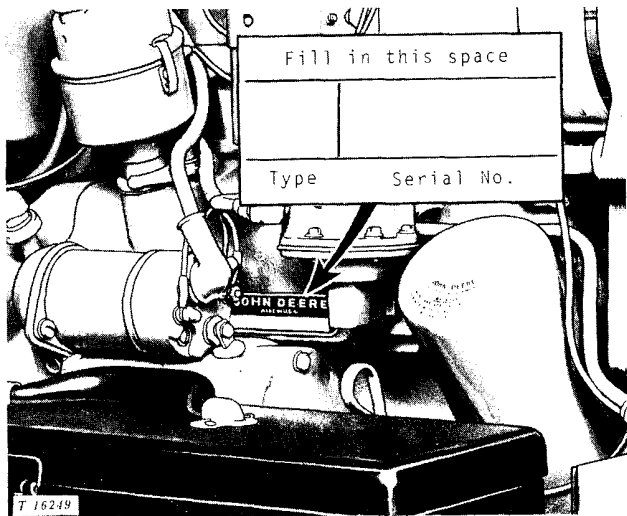
The warranty for this tractor appears on your copy of the Purchase Order which you should have received from your dealer when the equipment was purchased.

Your John Deere dealer wants to help you get the most value from your tractor. His skilled servicemen can handle every job efficiently. These men are trained in modern service methods; they have all necessary tools and equipment. If new parts are needed, only genuine John Deere parts will be installed. These parts are exact duplicates of the originals, made from the same patterns and of the same high-quality materials.

When in need of new parts, be prepared to furnish your dealer with the tractor type, complete tractor chassis serial number, engine type, and complete engine serial number. For ready reference, locate and record the above information in the spaces provided in the illustrations below.



Tractor Serial Number

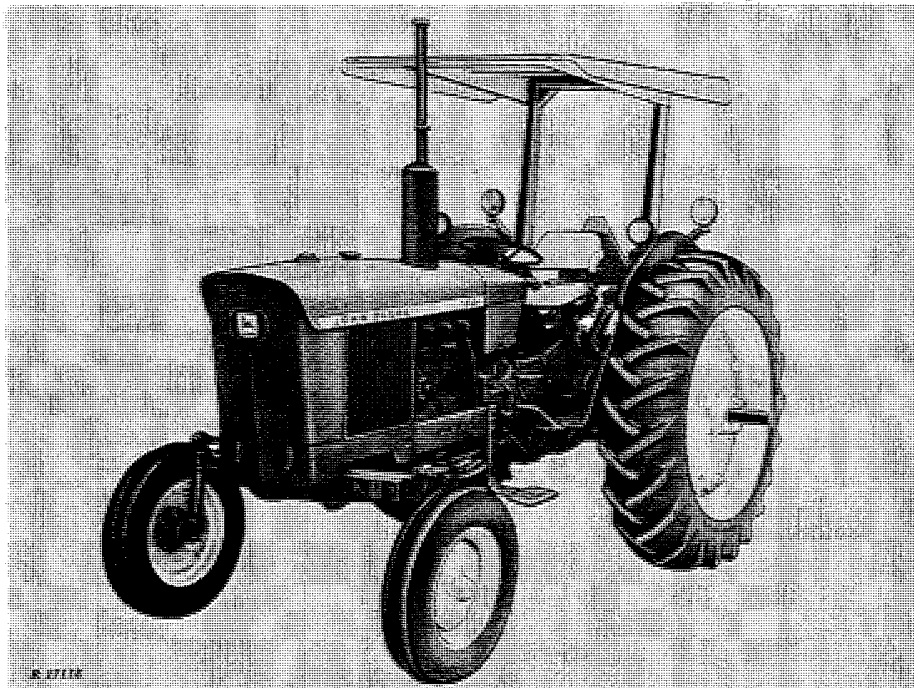


Engine Serial Number



CONTENTS

	Page
SPECIFICATIONS	2
CONTROLS AND INSTRUMENTS	4
OPERATION	5
SAFETY RULES	37
FUELS AND LUBRICANTS	38
LUBRICATION AND PERIODIC SERVICE	40
SERVICE	52
TRACTOR STORAGE	69
TROUBLE SHOOTING	70
INDEX	76



1520 HU Tractor Equipped with Roll-Gard and Canopy



SPECIFICATIONS

HORSEPOWER:*
 Observed at the PTO

	Gasoline	Diesel
Observed at the PTO	47.86	46.52

ENGINE:
 Type 3 cylinder, valve-in-head
 Engine speeds:
 Slow idle 600 rpm 800 rpm
 Working range 1500-2500 rpm
 Maximum trans-
 port speed 2680 rpm 2650 rpm
 Bore and stroke 4.02 x 4.33 in.
 Total displacement. 164 cu. in. 164 cu. in.
 Compression ratio. 8.0 to 1 16.3 to 1
 Firing order 1-2-3 1-2-3
 Intake valve clear-
 ance 0.014 in. 0.014 in.
 Exhaust valve clear-
 ance 0.022 in. 0.018 in.
 Distributor point gap 0.020 in.
 Distributor timing . 28° BTDC

ELECTRICAL SYSTEM:
 Voltage 12 volts 12 volts
 Battery terminal
 grounded Negative Negative
 Battery size 42 plate, 66 plate,
 41 amp-hour 70 amp-hour

COOLING SYSTEM:
 Type Pressurized with centrifugal pump
 Engine temperature control Heavy-duty
 thermostat

LUBRICATION SYSTEM: . . Force-feed pres-
 surized with full-flow oil filter

CAPACITIES (U.S. Standard Measures):
 Fuel tank 19-1/2 gals.
 Cooling system 3 gals.
 Crankcase (including filter) 6 qts.
 Transmission-hydraulic system 10 gals.
 Belt pulley 2-1/2 pts.

CLUTCH:
 Single or dual stage, spring-loaded, dry disk,
 foot operated.

TRANSMISSION:
 Type Collar shift
 Gear selections 8 forward and 4
 reverse
 Shifting 4 speeds each in high, low
 and reverse ranges. Park
 lock included.

POWER TAKE-OFF:
 Type Continuous-running, trans-
 mission-driven or in-
 dependent PTO types avail-
 able in 540 and/or 1000
 rpm options. See page 33
 for details.

DIFFERENTIAL AND FINAL DRIVES
 Type Planetary reduction final
 drives with spiral bevel
 gear drive differential.
 Differential lock . Foot-operated mechanical
 lock spring-loaded out of
 engagement.

HYDRAULIC SYSTEM
 Type Closed center, constant pressure
 Standby pressure 2250 psi

BRAKES Hydraulically actuated, wet-disk
 type.

HI-LO SHIFT
 Hydraulic wet clutches, no clutching required.
 Shifting from high to low decreases ground speed
 25.8 percent and increases pull power up to 35
 percent in any of the transmission speeds.

REVERSER
 Hydraulic wet clutches, no clutching required.
 Provides reverse speeds for gear selections 1
 through 4 which are 16 percent faster than
 corresponding forward speeds.

FRONT WHEEL TREAD See page 13

REAR WHEEL TREAD See page 14

FRONT TIRES:** 9.00-10
 6.00-16
 7.50-16

REAR TIRES:** 18.4-16.1
 12.4-24
 14.9-28
 12.4-36
 13.6-38

**Additional tire sizes available.

*Official test

TRAVEL SPEEDS (Miles Per Hour)

NOTE: On tractors with the Hi-Lo Shift option, high range speeds are the same as listed in the chart below. Low range speeds are 25.8 percent less than those listed. If tractor is equipped with a reverser, multiply forward speeds by 1.16 to obtain true reverse speeds.

Gear	1500 rpm		2100 rpm*		2500 rpm	
	14.9-28	13.6-38	14.9-28	13.6-38	14.9-28	13.6-38
1	0.88	1.03	1.23	1.45	1.46	1.72
2	1.25	1.48	1.76	2.07	2.09	2.46
3	1.86	2.19	2.61	3.07	3.11	3.66
4	2.60	3.07	3.65	4.30	4.34	5.11
5	3.45	4.06	4.83	5.69	5.75	6.78
6	4.93	5.81	6.90	8.13	8.22	9.68
7	7.32	8.62	10.25	12.07	12.20	14.37
8	10.23	12.05	14.33	16.87	17.05	20.09
R1	1.02	1.20	1.43	1.68	1.70	2.00
R2	1.46	1.72	2.04	2.40	2.43	2.86
R3	2.16	2.55	3.03	3.57	3.61	4.25
R4	3.03	3.56	4.24	4.99	5.05	5.94

*2100 engine rpm gives the SAE rated 540 or 1000 rpm PTO speed. Some PTO-driven machines are operated at other speeds. See the machine operator's manual for detailed instructions.

DIMENSIONS

	<i>RU Tractor with 14.9-28 rear tires, 6.00-16 front tires.</i>	<i>HU Tractor with 13.6-38 rear tires, 7.50-16 front tires.</i>	<i>LU Tractor with 18.4-16.1 rear tires, 9.00-10 front tires.</i>
Height to top of hood	56-3/4 in.	61 in.	52-1/4 in.*
Clearance (front axle)	20-3/8 in.	23-15/16 in.	17-3/4 in.
Over-all height	82 in.	87-1/2 in.	52-1/4 in.
Over-all width, min	65-5/8 in.	67-1/4 in.	65-5/8 in.
Over-all length (with 3-point hitch)	131-1/2 in.	126 in.	126 in.
Wheelbase (maximum)			
straight axle	80-11/6 in.	80-11/16 in.	- - - - -
sweptback axle	74-3/8 in.	- - - - -	74-3/8 in.
Turning radius (with brakes applied)			
straight axle	133 in.	128 in.	- - - - -
sweptback axle	127 in.	- - - - -	112 in.
Shipping weight (approx.)			
gasoline	4100 lbs.	4700 lbs.	4150 lbs.
diesel	4150 lbs.	4750 lbs.	4220 lbs.

*Height to top of steering wheel.

(Specifications and design subject to change without notice.)

Thank you so much for reading.
Please click the “Buy Now!”
button below to download the
complete manual.



After you pay.

You can download the most
perfect and complete manual in
the world immediately.

Our support email:

ebooklibonline@outlook.com