

**JOHN DEERE**  
**WORLDWIDE COMMERCIAL & CONSUMER**  
**EQUIPMENT DIVISION**

---

**Trim and Surrounds Mower**  
**7400**

SN (010001- )

OMTCU23699 C8

**OPERATOR'S MANUAL**



**JOHN DEERE**

**⚠ WARNING:** Diesel engine exhaust and some of its constituents are known to the State of California to cause cancer, birth defects, and other reproductive harm.

California Proposition 65 Warning

North American Version  
Litho in U.S.A.

# INTRODUCTION

---

## Thank You for Purchasing a John Deere Product

We appreciate having you as a customer and wish you many years of safe and satisfied use of your machine.

## Using Your Operator's Manual

This manual is an important part of your machine and should remain with the machine when you sell it.

Reading your operator's manual will help you and others avoid personal injury or damage to the machine. Information given in this manual will provide the operator with the safest and most effective use of the machine. Knowing how to operate this machine safely and correctly will allow you to train others who may operate this machine.

If you have an attachment, use the safety and operating information in the attachment operator's manual along with the machine operator's manual to operate the attachment safely and correctly.

This manual and safety signs on your machine may also be available in other languages (see your authorized dealer to order).

Sections in your operator's manual are placed in a specific order to help you understand all the safety messages and learn the controls so you can operate this machine safely. You can also use this manual to answer any specific operating or servicing questions. A convenient index located at the end of this book will help you to find needed information quickly.

The machine shown in this manual may differ slightly from your machine, but will be similar enough to help you understand our instructions.

RIGHT-HAND and LEFT-HAND sides are determined by facing in the direction the machine will travel when going forward. When you see a broken line (-----), the item referred to is hidden from view.

Before delivering this machine, your dealer performed a predelivery inspection to ensure best performance.

## Special Messages

Your manual contains special messages to bring attention to potential safety concerns, machine damage as well as helpful operating and servicing information. Please read all the information carefully to avoid injury and machine damage.



**CAUTION: Avoid injury! This symbol and text highlight potential hazards or death to the operator or bystanders that may occur if the hazards or procedures are ignored.**

**IMPORTANT: Avoid damage! This text is used to tell the operator of actions or conditions that might result in damage to the machine.**

***NOTE: General information is given throughout the manual that may help the operator in the operation or service of the machine.***

# PRODUCT IDENTIFICATION

---

## Record Identification Numbers

### 7400 Terrain Cut Mower PIN (010001-)

If you need to contact an Authorized Service Center for information on servicing, always provide the product model and identification numbers.

You will need to locate the identification numbers for the product. Record the information in the spaces provided below.

DATE OF PURCHASE:

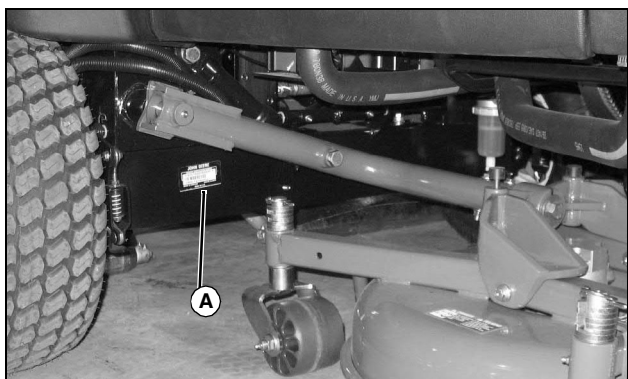
---

DEALER NAME:

---

DEALER PHONE:

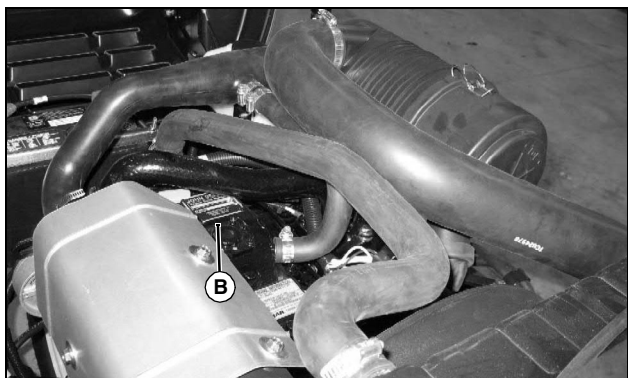
---



MX25176

PRODUCT IDENTIFICATION NUMBER (A):

---



MX25208

ENGINE SERIAL NUMBER (B):

---

# TABLE OF CONTENTS

---

Safety Labels .....	1
Safety .....	6
Operating Controls .....	12
Operating - Machine .....	13
Operating - Cutting Units .....	24
Replacement Parts .....	26
Service Intervals .....	27
Service Lubrication .....	29
Service Engine .....	31
Service Transmission .....	40
Service - Cutting Units .....	46
Service Electrical .....	50
Service Miscellaneous .....	53
Troubleshooting .....	58
Storage .....	64
Specifications .....	65
Warranty .....	67
Index .....	70

All information, illustrations and specifications in this manual are based on the latest information at the time of publication. The right is reserved to make changes at any time without notice.

COPYRIGHT© 2008  
Deere & Co.  
John Deere Worldwide Commercial and  
Consumer Equipment Division  
All rights reserved  
Previous Editions  
COPYRIGHT©

OMTCU23699 C8 - English

# SAFETY LABELS

## Safety Label Location

**▲ DANGER / POISON**

SHIELD YOUR EYES FROM FLYING DEBRIS  
DO NOT OPERATE MOWER WITHOUT PROTECTIVE SHIELDING DEVICES IN PLACE

DO NOT OPERATE MOWER WITHOUT PROTECTIVE SHIELDING DEVICES IN PLACE

KEEP OUT OF THE REACH OF CHILDREN  
READ ALL INSTRUCTIONS CAREFULLY  
FLUSH EYES IMMEDIATELY WITH WATER. GET MEDICAL HELP IF NECESSARY.  
CAUTION: HOT SURFACES. HOT OILS. HOT EXHAUST. HOT STEAM. HOT VAPORS. HOT GASES. HOT LIQUIDS. HOT METALS. HOT SURFACES. HOT STEAM. HOT VAPORS. HOT GASES. HOT LIQUIDS. HOT METALS.

**▲ CAUTION**  
HELP AVOID INJURY

- Read operator's manual
- Do not operate the machine without guards, shields, and safety devices in place and working
- Do not operate this machine when children and/or others are around
- Do not operate the machine unless you are trained
- Look behind before backing
- Keep people at a safe distance away
- Stay clear of power driven parts
- Do not operate where machine could tip
- Never carry riders
- Before leaving machine:
  - Stop engine
  - Set park brake
  - Remove key

**▲ ATTENTION**  
ÉVITER LES BLESSURES

- Lire le livret d'entretien
- Ne pas utiliser la machine sans que les protections et dispositifs de sécurité soient en place et en bon état de fonctionnement
- Ne pas utiliser cette machine à proximité d'enfants ou d'autres personnes
- Ne pas utiliser la machine sans avoir été formé
- Regarder derrière soi avant de reculer
- Ne laisser personne s'approcher
- Se tenir hors de portée des pièces entraînées
- Ne pas utiliser lorsque la machine risque de basculer
- Ne jamais prendre de passager
- Avant de quitter la machine:
  - Arrêter le moteur
  - Serrer le frein de stationnement
  - Retirer la clé

**▲ DANGER**  
Do not operate mower without deflector attached

**▲ PELIGRO**  
No usar el cortacésped sin el deflector instalado

**▲ DANGER**

- Use extreme caution on hills, slopes, and rough terrain
- The uphill wheel will not spin out and limit traction like conventional trim mowers
- If operated on a steep slope, rollover will occur before losing traction
- Do not operate on a slope until a site survey has been completed as outlined in the operator's manual
- When possible, mow up and down a hill rather than across it
- Do not turn on hills
- Avoid sudden stops, sudden turns, holes, drop offs, or hidden hazards in the terrain
- Avoid wet or loose turf conditions that may cause the machine to slide
- Always wear seat belt

**▲ PELIGRO**

- Tener sumo cuidado en laderas, pendientes y terreno accidentado
- La rueda en el lado ascendente de la pendiente no patina y limita la tracción como sucede con los cortacéspedes de acabado convencionales
- Si se hace funcionar en una pendiente empinada, la máquina se vuelca antes de perder la tracción
- No trabajar en una pendiente sin haber completado una inspección del sitio tal como se indica en el manual del operador
- Siempre que sea posible, cortar subiendo y bajando una pendiente, en lugar de en sentido transversal
- No hacer virajes en las laderas
- Evitar las paradas repentinas, virajes abruptos, baches, barrancos y los peligros ocultos en el terreno
- Evitar las condiciones húmedas o de prado suelto que puedan hacer que la máquina resbale
- Siempre abrocharse el cinturón de seguridad

**▲ DANGER ▲ PELIGRO**

To avoid injury from rotating blades, stay clear of deck edge.

Para evitar lesiones causadas por las cuchillas, mantenerse alejado del borde de la plataforma de corte.

**ROLL-OVER PROTECTIVE STRUCTURE**

To maintain operator protection and ROPS certification:

- Replace damaged ROPS, do not repair or revise
- Any alteration of ROPS must be approved by manufacturer

Meets requirements of pending standard:

ISO/CD 21299.3

ROPS Maximum Machine Weight: 1290 Kg

For use on John Deere 7000/8000 Series Mowers

Deere & Company Moline, Illinois, U.S.A.

**▲ DANGER**

To avoid injury or death from crushing, always wear seat belt. Do not jump from machine.

**USE SEAT BELT**

**ABROCHARSE EL CINTURÓN DE SEGURIDAD**

**▲ PELIGRO**

Para evitar las heridas o la muerte por ser aplastado por la máquina, abrochase siempre el cinturón de seguridad. No saltar de la máquina.

E - DANGER M131739  
F - DANGER TCU25613

Picture Note: Use label number listed in table below to locate complete text of safety label message following this illustration.

- A - CAUTION TCU23845
- B - DANGER POISON M97300
- C - ROPS PROTECTION TCU23848
- D - DANGER TCU22761

Thank you so much for reading.  
Please click the “Buy Now!”  
button below to download the  
complete manual.



After you pay.

You can download the most  
perfect and complete manual in  
the world immediately.

Our support email:

[ebooklibonline@outlook.com](mailto:ebooklibonline@outlook.com)