

965 Wagon



JOHN DEERE

OPERATORS MANUAL

965
Wagon

OMW21361 Issue G4 English

John Deere Welland Works
OMW21361 Issue G4

LITHO IN U.S.A.
ENGLISH





To the Purchaser


This new 965 Wagon was carefully designed and manufactured to give years of dependable service. To keep it running efficiently, read the instructions in this operator's manual. Each section is clearly identified so you can easily find the information you need...whether it is operation, lubrication, periodic service, or assembly. Read the Table of Contents to learn where each section is located.

In addition to the equipment furnished with your wagon, attachments are available to help you do a better job under special hauling conditions. These are described as optional equipment in this manual and can be purchased from your John Deere dealer.

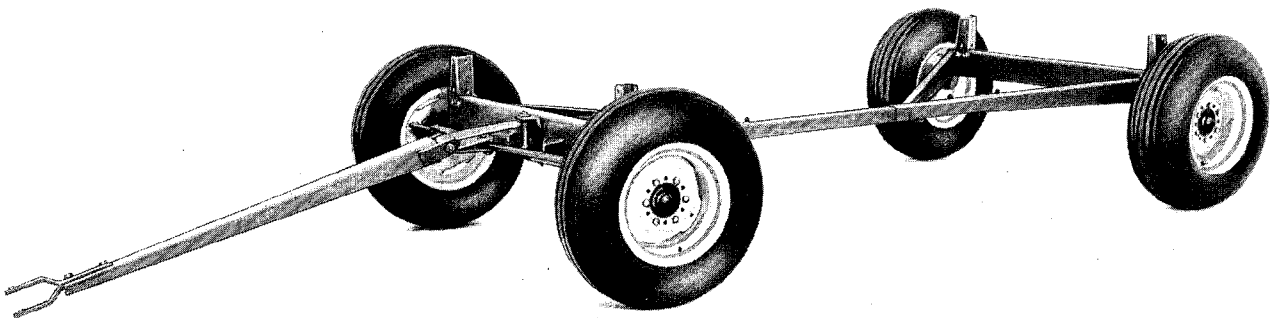
"Right-hand" and "left-hand" sides are determined by standing at the rear of the wagon facing in the direction of forward travel.

Record your wagon serial number in the space provided on page 11. Your dealer needs this information to give prompt, efficient service when you order parts or attachments. If your wagon required replacement parts, go to your John Deere dealer where you can obtain Genuine John Deere parts—accept no substitutes.

The warranty on this wagon appears on your copy of the purchase order which you should have received from your dealer when you purchased the wagon.

 This safety alert symbol identifies important safety messages in this manual. When you see this symbol be alert to the possibility of personal injury and carefully read the message that follows.

Your operator's manual contains SI Metric equivalents which follow immediately after the U.S. customary units of measure.



W5078



Contents

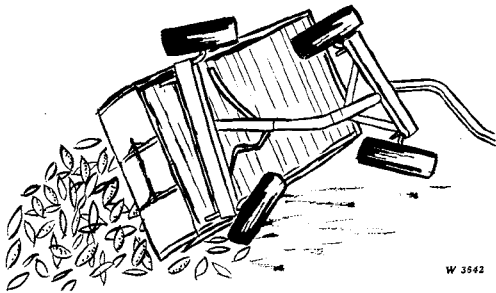
	Page
SAFETY	2
IDENTIFICATION VIEWS	3
OPERATION	4-5
Load Capacity	4
Checking Wheel Bolts	5
Checking Chassis	5
Tire Inflation	5
Load Distribution	5
Adjusting Wheelbase	5
LUBRICATION AND PERIODIC SERVICE	6-7
Lubrication	6
Inspecting and Adjusting Wheel Bearings	7
Adjusting Wheel Toe-In	7
EXTRA EQUIPMENT	8-9
Adjustable Hitch Pole	8
Long Reach	8
Bolsters and Bolster Stakes	8-9
Wheels and Tires	9
ASSEMBLY	10
Wheels	10
Front and Rear Frames	10
Pole	10
SPECIFICATIONS	11



Safety

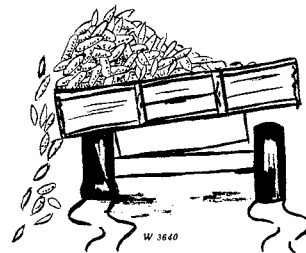
! Never ride on tractor drawbar or wagon tongue.

When hitching the wagon to the tractor, back the tractor past the clevis. Then move it slowly forward so that, in making the connection, the tractor will be moving away from you.



The rate of tractor travel on hillsides and curves should always be slow enough that there is no danger of tipping or loss of steering control.

Never drive close to the edge of a creek or ditch.

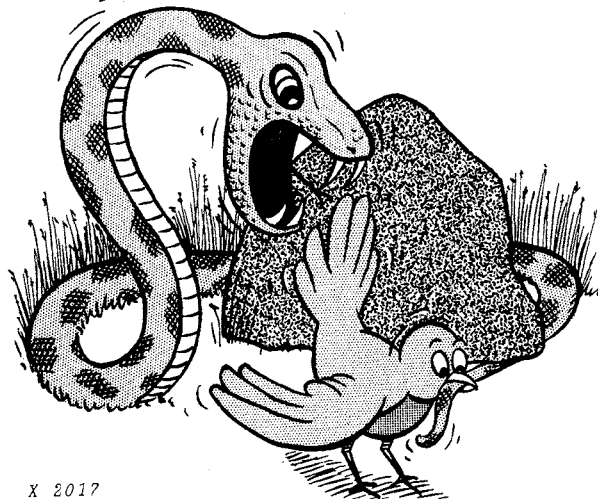


Be sure the load distribution is well balanced to insure proper trailing.

Always keep tractor in gear when going down steep grades.

When pulling the wagon on a road or highway at night or during the day, use accessory lights and devices for adequate warning to the operators of other vehicles. In this regard, check local governmental regulations. Various safety lights and devices are available from your John Deere dealer.

Accidents don't always happen to the other guy



Buy Now



Our support email:

ebooklibonline@outlook.com