

Walk-Behind Tillers and 5B Sprayer



JOHN DEERE

TECHNICAL MANUAL

Walk-Behind Tillers and 5B Sprayer

TM1233 (01JAN80) English

John Deere
Lawn & Grounds Care Division
TM1233 (01JAN80)

LITHO IN U.S.A.
ENGLISH



G
C
D



0 1 J A N 8 0
T M 1 2 3 3

WALK-BEHIND TILLERS AND 5B SPRAYER

Technical Manual

TM-1233 (Jan-80)

TABLE OF CONTENTS

SECTION 10 - GENERAL

- Group 5 - Machine Identification
- Group 10 - Specifications
- Group 15 - Fuel and Lubricants

SECTION 20 - TECUMSEH ENGINES

- Group 5 - General Information
- Group 10 - Minor Tune-Up
- Group 15 - Cylinder Head, Valves, and Breather
- Group 20 - Internal Components
- Group 30 - Recoil Starter
- Group 40 - Specifications

SECTION 25 - BRIGGS & STRATTON ENGINES

- Group 5 - General Information
- Group 10 - Minor Tune-Up
- Group 15 - Cylinder Head, Valves, and Breather
- Group 20 - Internal Components
- Group 30 - Recoil Starter
- Group 40 - Specifications

SECTION 30 - TECUMSEH FUEL SYSTEM

- Group 5 - General Information
- Group 10 - Adjustable Float-Type Carburetor
- Group 15 - Air Cleaner

(All information, illustrations, and specifications contained in this technical manual are based on the latest information available at the time of publication. The right is reserved to make changes at any time without notice.)

SECTION 35 - BRIGGS & STRATTON FUEL SYSTEM

- Group 5 - General Information
- Group 10 - Vacu-Jet Carburetor with Manual Choke
- Group 15 - Vacu-Jet Carburetor with Choke-A-Matic Choke
- Group 20 - Governor and Carburetor Linkage
- Group 30 - Air Cleaner

SECTION 40 - TECUMSEH ELECTRICAL SYSTEM

- Group 5 - Magneto Ignition System

SECTION 45 - BRIGGS & STRATTON ELECTRICAL SYSTEM

- Group 5 - Magneto Ignition System

SECTION 50 - POWER TRAIN

- Group 5 - 324, 524, and 624 Walk-Behind Tiller Power Train
- Group 10 - 216 Walk-Behind Tiller Power Train
- Group 20 - V-Belt Care and Maintenance

SECTION 60 - MISCELLANEOUS

- Group 10 - 5, 5A, and 5B Sprayer Pumps
- Group 20 - 5, 5A, and 5B Sprayer Spraying Systems

SECTION 70 - SPECIAL SERVICE TOOLS

- Group 5 - Tecumseh Essential Service Tools
- Group 10 - Briggs & Stratton Essential Service Tools
- Group 15 - Convenience Service Tools

Copyright © 1980
DEERE & COMPANY
Moline, Illinois
All rights reserved

INTRODUCTION

This technical manual contains service and maintenance information for the 216, 324, 524, and 624 Walk-Behind Tillers and 5B Sprayer.

The manual is divided into sections. Each section pertains to certain components or operational systems. The information is divided into groups within each section.

All sections of this technical manual should be carefully studied. Much basic information, such as the principles of 4-cycle engine operation, carburetion, and ignition can be found in any good library and is recommended reading for the new service technician before consulting this manual for service procedures.

Emphasis is placed on diagnosing malfunctions, analysis, and testing. Diagnosing malfunctions includes possible problems, their causes, and how to

correct them. Under specific components, these problems are analyzed to help you understand what is causing the problem. In this way, you can eliminate the cause rather than just replace parts and have the same problem keep recurring.

Whenever new or revised pages are provided, insert them into your manual as soon as you receive them. Your technical manual will always be up-to-date and be a valuable asset in your service department.



This safety alert symbol identifies important safety messages. When you see this symbol, be alert to the possibility of personal injury and carefully read the message that follows.

NOTE: Metric equivalents have been included, where applicable, throughout this technical manual.

Section 10 GENERAL

Group 5 MACHINE IDENTIFICATION

TABLE OF CONTENTS

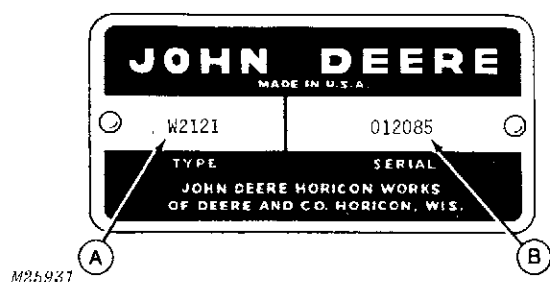
| | Page | | Page |
|---------------------------------------|---------|--------------------------------------|---------|
| GROUP 5 - MACHINE IDENTIFICATION | | Machine Specifications | 10-10-2 |
| Machines Covered in This Manual | 10-5-2 | Walk-Behind Tillers | 10-10-2 |
| Machine Serial Numbers | 10-5-2 | 5B Sprayer | 10-10-2 |
| Engine Serial Numbers | 10-5-2 | Bolt Torque Chart | 10-10-3 |
| | | Set Screw Seating Torque Chart | 10-10-3 |
| GROUP 10 - SPECIFICATIONS | | GROUP 15 - FUEL AND LUBRICANTS | |
| Machine Engine Model Numbers | 10-10-1 | Fuel and Lubricants | 10-15-1 |
| Engine Specifications | 10-10-1 | Grease Fitting Locations | 10-15-2 |

MACHINES COVERED IN THIS MANUAL

| Model Number | Description |
|--------------|--------------------|
| 5B | Sprayer |
| 216 | Walk-Behind Tiller |
| 324 | Walk-Behind Tiller |
| 524 | Walk-Behind Tiller |
| 624 | Walk-Behind Tiller |

MACHINE SERIAL NUMBERS

Each machine is assigned an individual serial number. The serial number plate is found near the engine base.



A—Identification Code

B—Serial Number

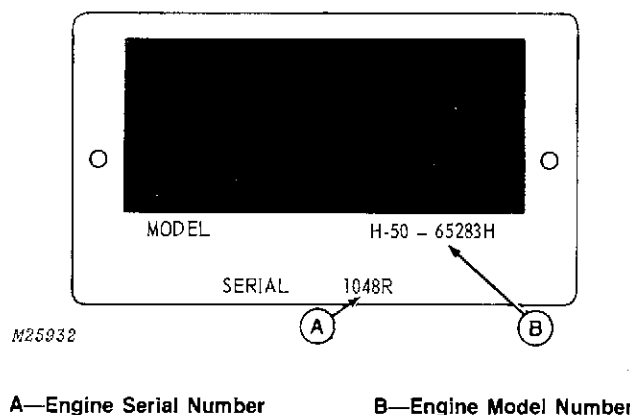
Fig. 1—Machine Serial Number Plate

Fig. 1 shows a typical serial number plate for machines manufactured before 1974.

On machines built after 1973, this number consists of 13 characters (Example: R324D 030001M). The first letter indicates the family of machine; the next three characters indicate the model or machine designation; the letter in the fifth position indicates the model year. This is followed by a space, a six-digit serial number, and an "M" denoting Horicon as the factory of manufacture.

When ordering parts, use only the six-digit serial number. Use all 13 characters when writing about or filling out warranty claims.

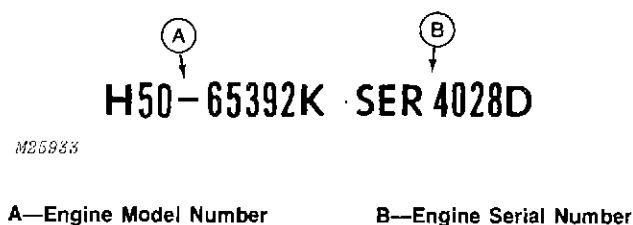
ENGINE SERIAL NUMBERS



A—Engine Serial Number

B—Engine Model Number

Fig. 2—Tecumseh Engine Serial Number Plate



A—Engine Model Number

B—Engine Serial Number

Fig. 3—Tecumseh Engine Serial Number Stamping

The Tecumseh engine serial number is on a serial number plate, Fig. 2, on the blower housing or crankcase, or on a serial number stamping, Fig. 3, on the blower housing. Use the model and serial number on all warranty claims.

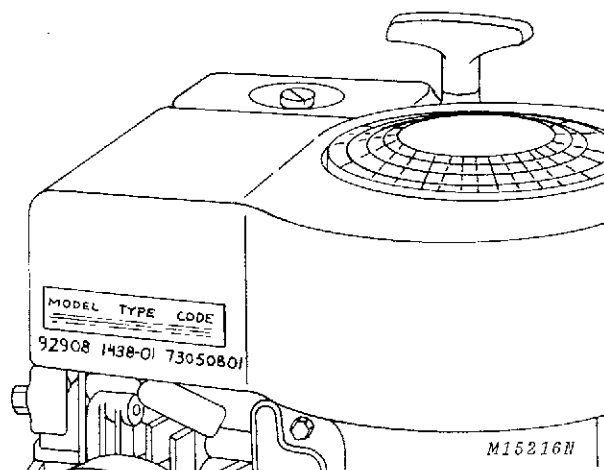


Fig. 4—Briggs & Stratton Engine Identification Number

The Briggs & Stratton engine identification number is stamped below the decal on the blower housing. The stamping gives the model, type, and code numbers. Use the type and code numbers on all warranty claims.

Thank you so much for reading.
Please click the “Buy Now!”
button below to download the
complete manual.



After you pay.

You can download the most
perfect and complete manual in
the world immediately.

Our support email:

ebooklibonline@outlook.com