

COMBINES 360/330/430/530/630/730

Technical Manual
TM-4222 (Jan-74)

CONTENTS

SECTION 10 — GENERAL INFORMATION

- Group 5 - Specifications
- Group 10 - Pre-Delivery, Delivery and After-Sales Inspections
- Group 15 - Service and Lubrication
- Group 20 - Engine and Combine Tune-Up
- Group 25 - Separation

SECTION 20 — ENGINE

- Group 5 - General Information, Diagnosing Malfunctions
- Group 10 - Cylinder Head and Camshaft
- Group 15 - Cylinder Block, Liners, Pistons and Connecting Rods
- Group 16 - Installation of 3-Seal Cylinder Liners
- Group 20 - Crankshaft, Main Bearings and Flywheel
- Group 25 - Timing Gear Train
- Group 30 - Oil Pump, Pressure Regulating Valve and Oil Filter
- Group 35 - Cooling System
- Group 40 - Speed Control Linkage

SECTION 30 — FUEL SYSTEM

- Group 5 - Diagnosing Malfunctions
- Group 10 - Fuel Tank, Transfer Pump, Fuel Filters, Air Cleaner
- Group 15 - Roto Diesel Fuel Injection Pump
- Group 20 - Roosa Master Model DB Fuel Injection Pump
- Group 25 - Roosa Master Model CB Fuel Injection Pump
- Group 30 - Roosa Master Injection Nozzles
- Group 35 - CAV Injection Nozzles
- Group 40 - Cold Weather Starting Aid

SECTION 40 — ELECTRICAL SYSTEM

- Group 5 - Diagnosing Malfunctions
- Group 10 - Individual Parts and Wiring Diagram
- Group 11 - Reverser Clutch, Linkage and Control
- Group 15 - Bosch Helical-Spline Sliding Gear Starting Motor
- Group 20 - Delco Remy Helical-Spline Sliding Gear Starting Motor
- Group 25 - Generator
- Group 30 - Enclosed-Type Alternator

SECTION 50 — POWER TRAIN

- Group 5 - Clutch and Clutch Linkage - Combines 330/430
- Group 10 - Clutch and Clutch Linkage - Combines 530/630/730
- Group 15 - Front Axle - Combines 330/430 up to Serial No. 303995 and 402960
- Group 20 - Front Axle - Combines 330/430, Serial No. 303996 and 402961 - Up
- Group 25 - Front Axle - Combines 530/630/730
- Group 30 - Track System for Combines 630/730
- Group 35 - Separator Drive
- Group 40 - Variable Drives
- Group 45 - Power Drive Gear - Combine 360

SECTION 60 — REAR AXLE, MANUAL STEERING AND MECHANICAL BRAKES

- Group 5 - Foot Brakes - Combines 530/630/730
- Group 10 - Foot Brakes - Combines 330/430
- Group 15 - Manual Steering
- Group 20 - Parking Brake - Combines 530/630/730
- Group 25 - Parking Brake - Combines 330/430
- Group 30 - Rear Axle - Combines 330/430/530/630/730

SECTION 70 — HYDRAULIC SYSTEM

- Group 5 - General Information, Pressure Tests, Diagnosing Malfunctions
- Group 10 - Hydraulic Oil Reservoir, Filter and Oil Lines
- Group 15 - Hydraulic Pumps and Flow Divider
- Group 20 - Three-Spool Control Valve
- Group 25 - Hydraulic Cylinders
- Group 30 - Steering Cylinder (Power Assisted)
- Group 35 - Hydrostatic Steering
- Group 40 - Hydraulic System of 360 Combine
- Group 45 - Hydraulic Brakes
- Group 50 - Reverser Clutch Control

SECTION 80 — MISCELLANEOUS

- Group 5 - Cutting Platform and Cutter Bar Drive
- Group 10 - Cylinder, Concave and Rotary Deflector
- Group 15 - Separating and Cleaning Units
- Group 20 - Bearings
- Group 25 - Fundamentals about V-Belts, Flat Belts and Chain Drives

INTRODUCTION

This technical manual for model 360/330/430/530/630 and 730 combines is a concisely written publication for the service personnel. It contains procedures and specifications which an individual cannot be expected to remember. The table of contents on the first page of this manual lists the individual sections and their groups. A table of contents on the first page of each section lists the groups in the section and the page number of the major subjects found in each group. Coloured tabs make it easy to locate the individual sections.

Coverage for each components includes:

General information, diagnosing malfunctions, checks (if necessary), removal (if necessary), disassembly, repair, assembly (if necessary), installation (if necessary, adjustments, specifications and special tools.

Specifications and special tools are always listed at the end of each group.

The section "GENERAL INFORMATION" includes detailed specifications and instructions for "Pre-delivery, delivery and after-sales inspections" as well as "Engine and combine tune-up" to restore full performance.

Combine service and lubrication as well as lubricants required are described in the Operator's Manual.

In principle, the present technical manual contains specifications and service information on 3, 4 and 6 cylinder John Deere engines only — as far as the engine is concerned. However, section "General Information" includes vital specifications on Perkins 6.354 engine. Nevertheless, when doing repair work on a Perkins 6.354 6-cylinder engine, the "Perkins Shop Manual" on 6.354 engine should be consulted in any case.

Little explanation is given about theory of operation in this manual unless the theory is peculiar only to the component in the combine. Basic theory of operation and general information about the systems or components of the tractor will be found in the "JOHN DEERE Fundamentals of Service" manuals.

This manual was planned and written for the mechanic charged with combine service. Keep it in the shop where it is readily accessible and refer to it whenever in doubt about correct service procedures. Using it as a guide for any and all service problems will reduce error and costly delay.

Thus, make it a habit to use this manual when doing any repair work on a combine of the Zweibrücken series and keep it always close at hand. You will see that it becomes your most important special tool.

Section 10

GENERAL INFORMATION

CONTENTS OF THIS SECTION

GROUP 5 — SPECIFICATIONS		Page		Page
Serial numbers		5-2	Removing and installing transmission on	
Model numbers		5-3	combines 330/430 from serial	
Engine		5-4	No. 303996 and 402961	25-5
Cutter bar		5-6	Removal	25-5
Knife		5-6	Installation	25-5
Reel		5-6	Removing and installing transmission on	
Cutting platform		5-8	combines 530/630/730	25-6
Auger		5-8	Removal	25-6
Cylinder		5-8	Installation	25-7
Concave		5-10	Removing and installing final drive on	
Beater		5-10	combines 530/630/730	25-7
Separator		5-10	Removal	25-7
Chaffer		5-10	Installation	25-7
Grain sieve		5-12	Removing and installing front axle on	
Chaffer extension		5-12	combines 530/630/730	25-7
Fan		5-12	Removal	25-7
Clutch		5-12	Installation	25-9
Electrical system		5-12	Removing and installing rear axle	
Starting motor		5-14	on combines 330-730	25-9
Transmission		5-14	Removal	25-9
Hydraulic system		5-14	Installation	25-9
Steering system		5-16	Removing and installing steering pump on	
Brakes		5-16	combines 430-730 with hydrostatic	
Capacities		5-18	steering	25-10
Tires		5-18	Removal	25-10
Tire inflation pressure		5-20	Installation	25-10
Travel speeds		5-20	Removing and installing steering valve on	
Weight		5-20	combines 430-730 with hydrostatic	
Dimensions		5-20	steering	25-10
GROUP 10 — PREDELIVERY, DELIVERY			Removal	25-10
AND AFTER-SALES INSPEC-			Installation	25-11
TIONS			Removing and installing selective control	
General Information	10-1		valve on combines 330-730	25-11
GROUP 15 — LUBRICATION AND			Removal	25-11
PERIODIC SERVICE		15-1	Installation	25-11
GROUP 20 — ENGINE AND COMBINE			Removing and installing steering cylinder on	
TUNE-UP		20-1	combines 430-730 with hydrostatic	
General information	20-1		steering	25-11
Preliminary engine testing	20-1		Removal	25-11
Engine tune-up	20-2		Installation	25-12
Checking engine performance	20-4		Removing and installing power-assisted stee-	
Combine tune-up	20-4		ring cylinder on earlier combine models	25-12
Standard torques	20-6		Removal	25-12
Special tools	20-7		Installation	25-12
GROUP 25 — COMBINE SEPARATION			Removing and installing hydraulic pump on	
Removing engine	25-1		combines 330-730	25-12
General information	25-1		Removal	25-12
Installing engine	25-2		Installation	25-13
Removing and installing transmission on			Removing and installing brake valve	25-13
combine 330/430 up to serial			Removal	25-13
No. 303995 and 402 960	25-3		Installation	25-13
Removal	25-3		Removing and installing clutch operating	
Installation	25-3		cylinder	25-14
Removing and installing front axle on			Removal	25-14
combines 330/430 from serial			Installation	25-14
No. 303996 and 402961	25-3		Specifications	25-14
Removal	25-3		Torques for hardware	25-14
Installation	25-5		Special tools	25-14

Group 5

SPECIFICATIONS

SERIAL NUMBERS

The combine serial number is stamped into the name plate on the right-hand side of the operator's platform.

The serial number is also stamped into the right-hand angle frame of the combine (see figs. 1 and 2) if the name plate gets lost for any reason.

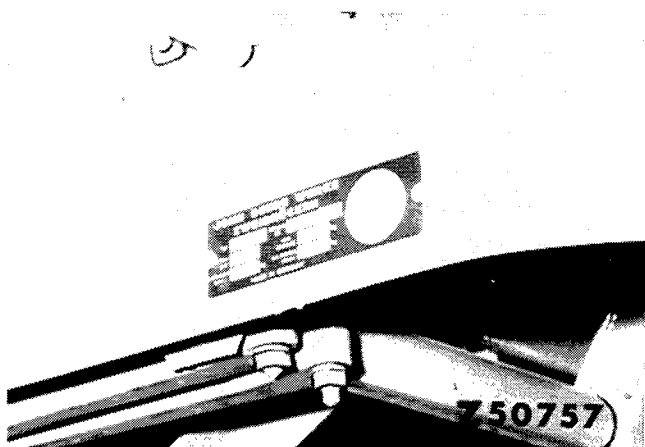


Fig. 1 — Serial Number Plate on Operator's Platform

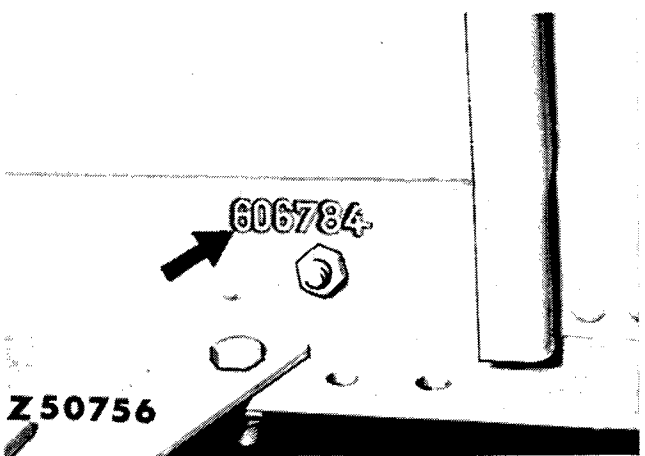


Fig. 2 — Serial Number Stamped into Angle Frame

The serial number of a John Deere engine is stamped into the name plate on the lower right of the cylinder block (see fig. 3).

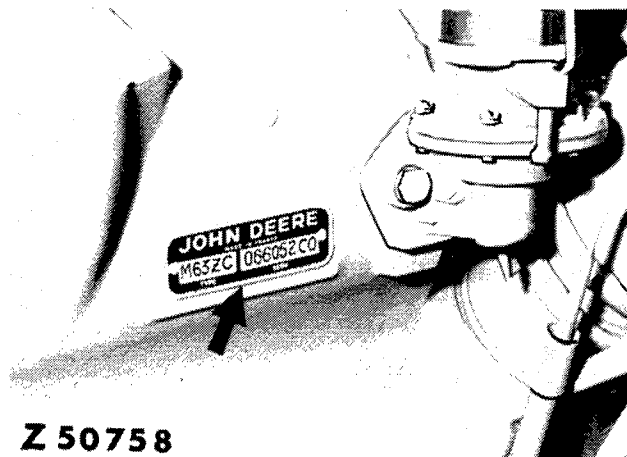


Fig. 3 — Engine Serial Number on a John Deere Engine

The serial number of a 6.354 Perkins engine is stamped into a level face on the injection pump drive housing at the left of the cylinder block (see fig. 4).

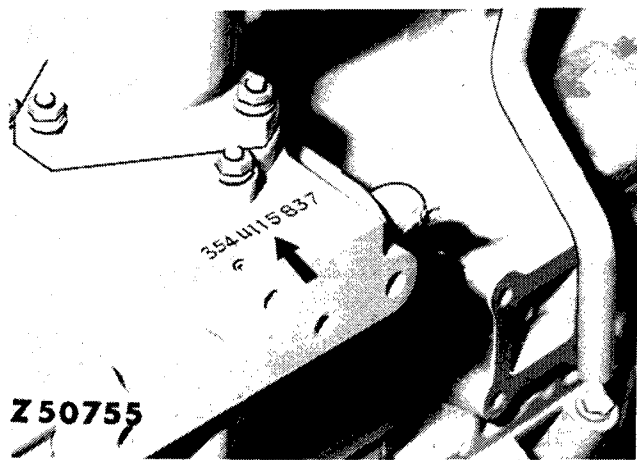


Fig. 4 — Serial Number Stamped into Perkins Engine

The serial number of the cutting platform is stamped into a plate on the outer right side panel of the platform (see fig. 5).

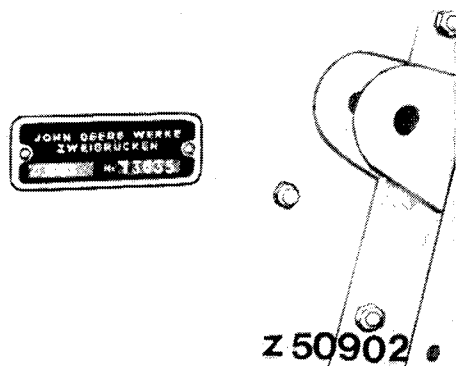


Fig. 5 — Serial Number of Cutting Platform

NOTE: When ordering parts or making out a warranty claim, always state the serial numbers required as they are vital for proper parts delivery or processing of claims, resp.

MODEL NUMBERS

The injection pump, injection nozzles, generator, starter and the main hydraulic pump have model numbers to facilitate identification of different makes of a given unit.

Thank you so much for reading.
Please click the “Buy Now!”
button below to download the
complete manual.



After you pay.

You can download the most
perfect and complete manual in
the world immediately.

Our support email:

ebooklibonline@outlook.com