

TABLE OF CONTENTS

4494 AND 4694 TRACTORS

SERIES	SECTION	DESCRIPTION	FORM NUMBER
10	GENERAL		
	1210	General Specifications - 4494 Tractor	8-26230
	1211	General Specifications - 4694 Tractor	8-26240
	1215	Lubrication - 4494 Tractor	8-26270
	1216	Lubrication - 4694 Tractor	8-26280
	1220	Engine Specifications	8-20841
	1230	Fuel System Specifications	8-21520
	1250	Steering System Specifications	8-21530
	1260	Power Train Specifications	8-26370
	1270	Brake System Specifications	8-21550
	1280	Hydraulic System Specifications	8-21560
20	ENGINES		
	2201	Troubleshooting - Engine	8-20111
	2202	Engine Tune-Up	8-21570
	2110	Engine, Front Axle and Transmission Removal	8-23071
	2215	Cylinder Head, Valve Train and Camshaft	8-21590
	2225	Cylinder Block, Sleeves, Pistons and Rods	8-21600
	2235	Crankshaft, Main Bearings, Flywheel and Oil Seals	8-21610
	2245	Lubrication System - Oil Pump, Oil Pan and Heat Exchanger	8-21620
	2545	Intercooler - 4694 Tractor Engine	8-26160
	2255	Cooling System	8-21631
	2265	Turbocharger - T04B	8-21640
	2565	Turbocharger Failure Analysis	9-78235
	2275	Air Induction System	8-21650
	2290	Reconditioning Engine Cylinder Block	8-21170
30	FUEL SYSTEM		
	3210	Fuel System and Filters	8-21660
	3212	Robert Boch Fuel Injection Pump	8-21670
	3213	American Boch Fuel Injectors	8-21680
40	ELECTRICAL		
	4201	Electrical System Troubleshooting	8-25590
	4205	Instrument Cluster Troubleshooting	8-26360
	4210	Tractor Electrical Wiring Diagram	8-25880
	4220	Cab Electrical Wiring Diagram	8-25260
	4225	Steering Electrical Wiring Diagram	8-25870
	4226	Hitch Electrical Wiring Diagram	8-23300
	4230	Starting Motor	8-21420
	4235	Battery Servicing and Testing	8-20291
	4240	Alternator System	8-25690
	4280	Neutral Start Switches	8-21710
50	STEERING		
	5203	Electronic Steering System	8-23700
	5205	Testing Tractor Steering System	8-21720
	5210	Steering Column, Pump and Valve	8-21730
	5220	Steering Cylinders	8-21740
	5230	Steering Lines and Controls	8-21750
	5240	Rear Steering Valve	8-21760
	5250	Front Steering Priority Valve	8-21770
	5260	Rear Steering Priority Valve	8-21780
	5265	Rear Steering Check Valve	8-26430
	5280	Front and Rear Steering Adjustments	8-21790

Reprinted

TABLE OF CONTENTS

4494 AND 4694 TRACTORS

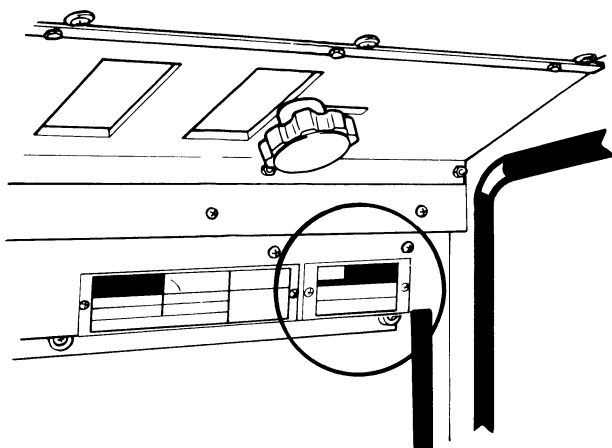
SERIES	SECTION	DESCRIPTION	FORM NUMBER
60	POWER TRAIN		
	6220	Torque Limiter Clutch	8-21810
	6230	Power Shift	8-21820
	6236	Power Shift Solenoid	8-26000
	6240	Four Speed Transmission	8-25950
	6245	Hydraulic PTO	8-21850
	6250	Axles and Planetaries	8-25930
	6260	Differentials and Drive Shafts	8-21871
	6261	No-Spin Front Differential and Drive Shaft	8-25970
	6235	Power Shift Control Valve and Linkage	8-25140
70	BRAKES		
	7210	Brake Pedal, Parking Brake and Tractor Brake	8-26020
	7220	Brake Valve	8-26030
80	HYDRAULIC		
	8202	Troubleshooting Hitch System	8-21890
	8203	Hitch Alignment	8-23311
	8205	Testing Tractor Hydraulic System	8-21900
	8210	Hydraulic Oil Filters	8-21910
	8225	Hydraulic Pump	8-21920
	8250	Remote Hydraulic Valves	8-25370
	8255	Flow Divider and PTO Control Valve	8-21940
	8281	Hitch System	8-23240
	8282	Hitch System	8-26350
	8290	Break-Away Couplings and Portable Cylinders	8-20640
90	ACCESSORIES		
	9205	Troubleshooting Air Conditioning System	8-21960
	9215	Gauging and Testing Air Conditioning System	8-21970
	9225	Compressor Isolation, Removal, Installation and Excavation - Discharging, Evacuation, and Charging the A.C. System	8-21980
	9235	Servicing Air Conditioner Components	8-21990
	9245	Servicing the Cab Blower	8-25580
	9250	Operators Seat	8-25510
	9260	Hood Removal and Alignment	8-26010
	9280	Pedal and Lever Adjustments	8-26310
	9290	Safety Decal Location	8-26210
100	HOW IT WORKS		
	14205	Digital Instrument Cluster	8-25110
	16430	Electrically Actuated and Hydraulic Operated 12 Speed Power Shift	8-26300
	18225	Case CON TROL Hydraulics	8-21350

Section 1210

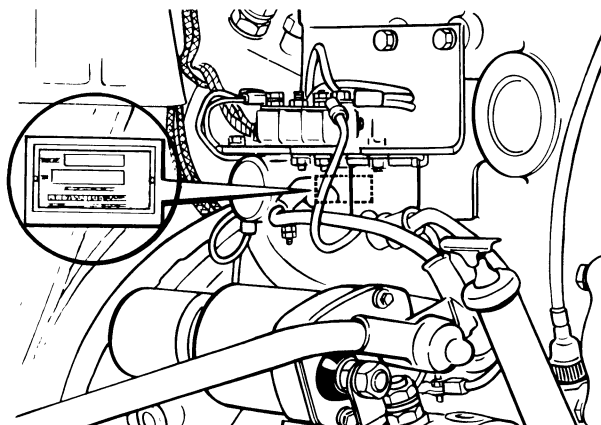
GENERAL SPECIFICATIONS 4494 TRACTORS

Written In *Clear
And
Simple
English*

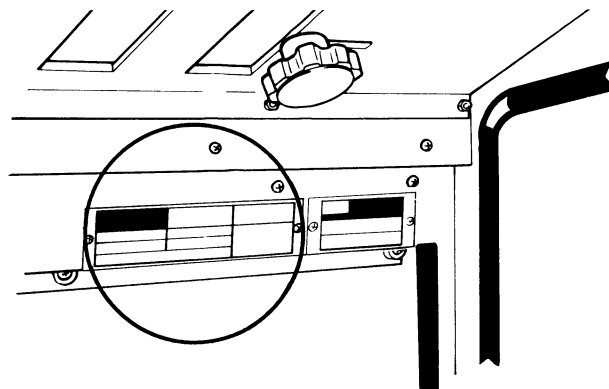
SERIAL NUMBERS



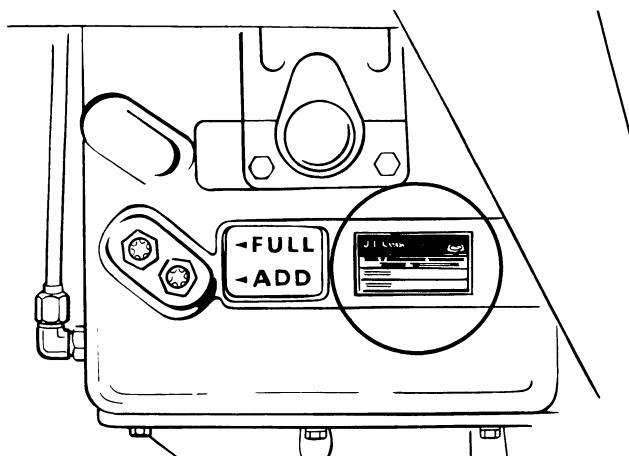
**MODEL AND PRODUCT IDENTIFICATION
NUMBER PLATE**



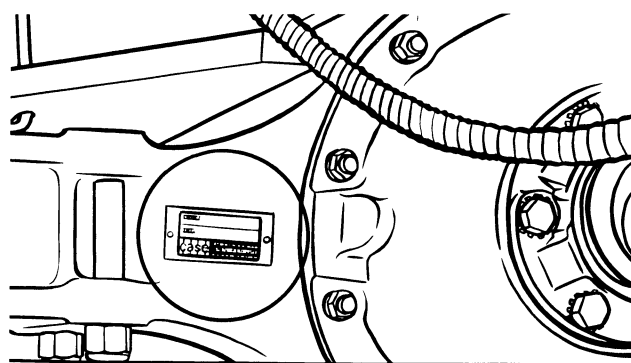
ENGINE SERIAL NUMBER PLATE



CAB SERIAL NUMBER PLATE



TRANSMISSION SERIAL NUMBER PLATE



**AXLE SERIAL NUMBER
PLATE (Front and Rear)**

DIESEL ENGINE SPECIFICATIONS

General

Type	Six Cylinder, Four Stroke Cycle, Turbocharged, Valve in Cylinder Head
Firing Order	1-5-3-6-2-4
Bore	4-5/8 Inches (117.5 mm)
Stroke	5 Inches (127 mm)
Piston Displacement	504 Cubic Inches (8 259 cm ³)
Compression Ratio	15.75 to 1
Cylinder Sleeves	Wet Type, Can be Removed.
Governor Engine Speed without Load	2340 to 2380 RPM
Rated Engine Speed	2200 RPM
Engine Idle Speed	725 to 775 RPM
Rocker Arm-to-Valve Clearance (Exhaust)	0.025 Inch (0.635 mm)
(Intake)	0.015 Inch (0.381 mm)

IMPORTANT: *Rocker Arm-to-Valve clearance adjustment must be made when the engine is not running.*

Piston and Rod

Rings Per Piston	3
Compression Rings Per Piston	2
Oil Rings Per Piston	1
Type Piston Pin	Full Float
Type Bearings	Replacement Bearings Available, Steel Back with Aluminum or Copper and lead liners.

Main Bearings

Quantity of Bearings	7
Type of Bearings	Replacement Bearings Available, Steel Back with Aluminum or Copper and Lead Liners.

Engine Lubrication System

Oil Pressure	45 to 60 PSI (310 to 414 kPa)(3.1 to 4.14 bar) with Engine Warm and Operating at Rated Speed.
Type System	Pressure and Spray with Piston Oil Cooling
Oil Pump	Gear Type
Oil Filters (2)	Full Flow, Turn on Type, ByPass Valve in Filter Base.
Oil Capacity	With Filters, 28 U.S. Quarts (27 litres) Without Filters, 24 U.S. Quarts (23 litres)
Oil Cooler	Engine Oil

Thank you so much for reading.
Please click the “Buy Now!”
button below to download the
complete manual.



After you pay.

You can download the most
perfect and complete manual in
the world immediately.

Our support email:

ebooklibonline@outlook.com