

TABLE OF CONTENTS

430, 530, 470 AND 570 TRACTORS

SERIES	SECTION	DESCRIPTION	FORM NUMBER
10	GENERAL		
	C	Specifications - 430-470	9-77001
	C	Specifications - 530-570	9-77011
20	ENGINES		
	2013	Cylinder Head and Valves - Spark Ignition	9-80512
	2014	Cylinder Head and Valves - Diesel	9-80473
	2023	Cylinder Block Assembly - Spark Ignition	9-76995
	2024	Cylinder Block Assembly - Diesel	9-77005
30	FUEL SYSTEM		
	3010	Fuel System and Filters - 188 and 207 Diesel Engines	9-78785
	3110	Fuel Strainer and Filter - Spark Ignition Engines	9-79065
	3022	Roosa Master DB Fuel Injection Pump	9-80422
	3013	Roosa Master Fuel Injectors	9-78806
	I	CAV Fuel Injectors	9-75492
	35	Model TSX Series Carburetor - 430-470	9-80581
	3033	Model 267 Series Zenith Carburetor - 530-570	9-77016
	NN	LP Gas RDG Regulator and CBX Carburetor	9-76491
40	HYDRAULICS		
	4019	Portable Hyd. Cyl. and Break Away Couplings	9-74197
	D	Servicing the Remote Hydraulic Valves	9-75521
	DD	Servicing the Hydraulic Pump	9-77061
	R	Draft-O-Matic Hydraulic System	9-77081
50	STEERING		
	0	Hydrostatic Steering System	9-76072
	00	Power Steering System	9-76091
	3''0''	Mechanical Steering System	9-76111
		Packing Front Wheel Bearings	9-79341
	4''0''	Servicing the Front Axle	9-76121
60	POWER TRAIN		
	65	Four Speed Transmission and Final Drive	9-80641
	66	Servicing the Mechanical Shuttle	9-80771
	67	Dual Range Assembly	9-80781
	4S	Splitting the Tractor at Torque Tube and Transmission	9-78081
	68	11 Inch Traction Clutch	9-80792
	6S	Standard Power Take-Off	9-77141
	7S	Independent Power Take-Off	9-77151
	X	Case-O-Matic Drive - 530-570	9-75901
70	BRAKES		
	74	Differential Brakes	9-80691
80	ELECTRICAL		
	F	Supl. No. 3 Wiring Diagram - 430-470	9-75541
	F	Supl. No. 4 Wiring Diagram - 530-570	9-75541
	F	Electrical System, Generator System	9-77023
	83	Distributor Ignition System	9-74625
	8012	Starting and Cranking Motors	9-75366
	8013	Battery Servicing and Testing	9-75377
	8014	Prestolite Alternator	9-75399

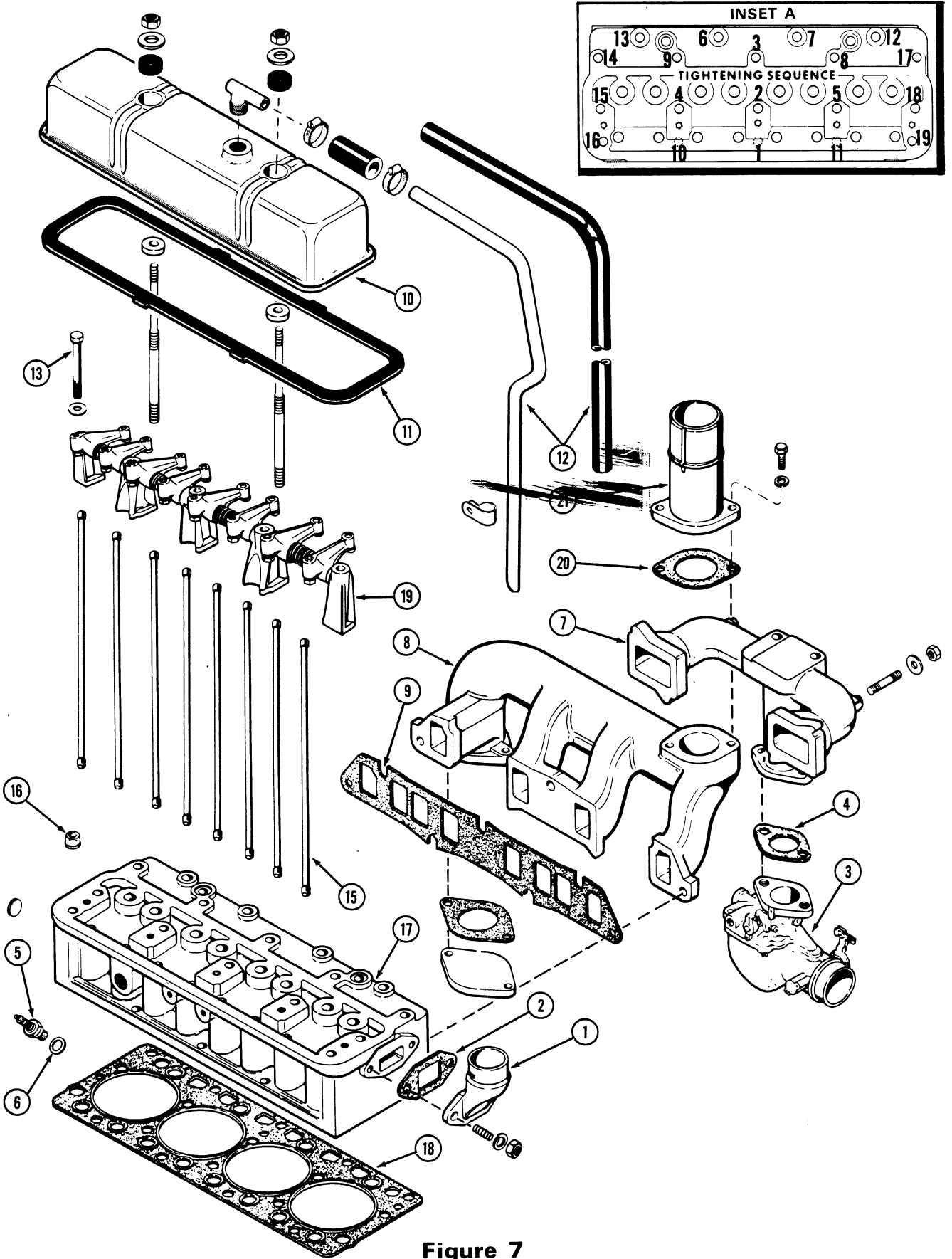


Figure 7

ROCKER ARM ASSEMBLY

148 AND 159

(Refer to Figure 8)

Disassembly

1. Remove the rocker arm shaft bracket bolts (1) and studs (9). **NOTE:** The center bracket is drilled for oil passage to the rocker arm shafts.
2. Remove and tag each rocker arm bracket (2 & 10) for proper location when assembling. **NOTE:** The end brackets will have to be moved outward slightly in order to remove the retainer pins (4) from the shafts (5) before the end brackets can be removed.
3. Remove the shaft springs (8) and spacers (11) from the shafts (5). Tag the front and rear shafts (5) for proper location when assembling.
4. Remove the tappet adjusting screws (12) from the rocker arms. Remove the push rods and tag them for proper location.

Inspection

Check the shaft springs for damage and proper tension.

SPRING SPECIFICATIONS

Free Length	1-3/16
Wire Diameter072"
I.D.	11/16"
Compressed to 11/16"	7.5 to 8.5 lbs.

Flush the shafts to remove any residual material. Inspect the shafts for excessive wear or worn spots on the bottom side of the shaft. Replace the shaft if any of these conditions exists.

Inspect the rocker arms by installing each rocker arm on the shafts in its proper location.

The rocker arm must be free on the shaft without any side wobble. If any is noted, replace the rocker arm bushing. Clean the oil passage in the rocker arms, Inset A, to insure free oil flow. Inspect the valve stem contact area on the rocker arm for wear. Replace if worn.

Clean and check the oil passage in the tappet adjusting screws.

Inspect the push rods for straightness, cracked or worn ends, replace if these conditions exist.

Clean and check the oil passage in the center rocker arm bracket, Inset B.

Assembly

With all component parts cleaned thoroughly and worn parts replaced, coat them with clean engine oil.

1. Install the plugs (3) in to the outer ends of the shafts (5), if they were removed, to a point which will allow the retainer pins (4) to be installed and not block any oil holes. **NOTE:** If the plugs (3) are installed too far they will block the flow of oil to one or more rocker arms.
2. Install the end brackets (2) part way on the shafts (5) so the retaining pins (4) can be installed in shaft. Tap the end brackets further on the shafts so the pin engages the slot in the bracket and the oil holes in the shaft are toward the valve side of the bracket.
3. Install new rocker arm bushing (13) in to the rocker arms (6 & 7) if they are being replaced. **NOTE:** The bushing (13) must be pressed into the rocker arm and reamed to .624"-.625", Inset A.
4. Starting with the front shaft install a rear rocker arm (7), spring (8), front rocker arm (6), intermediate bracket (2), spacer (11), rear rocker arm (7), spring (8) and front rocker arm (6).
5. Starting with the rear shaft install a front rocker arm (6), spring (8), rear rocker arm (7), intermediate bracket (2), spacer (11), front rocker arm (6), spring (8) and rear rocker arm (7).
6. Install these two rocker arm shaft assemblies into the center bracket (10) and wire the complete assembly together.
7. Install the tappet adjusting screws (12) into the rocker arms (6 & 7) as far as possible.
8. Install the push rods in their proper location. Install the rocker arm assembly to the cylinder head with the bracket bolts (1) and studs (9). Torque the bracket bolts and stud nuts 25-30 ft. lbs.
9. Adjust the tappets, refer to Page 26.

Thank you so much for reading.
Please click the “Buy Now!”
button below to download the
complete manual.



After you pay.

You can download the most
perfect and complete manual in
the world immediately.

Our support email:

ebooklibonline@outlook.com