

## 2100 Series Tractors

### Table of Contents

|   |  | SECTION NO. | FORM NO. |
|---|--|-------------|----------|
| 1 | <b>GENERAL</b>   |             |          |
|   | Safety, General Information and Torque Specifications .....        | 1001        | 8-86530  |
|   | Specifications .....   | 1002        | 7-35100  |
| 2 | <b>ENGINE</b>  |             |          |
|   | Engine Removal and Installation .....                              | 2001        | 7-35130  |
|   | Servicing the Engine .....   | 2002        | 7-35141  |
| 3 | <b>FUEL SYSTEM</b>   |             |          |
|   | Servicing the Fuel System .....                                    | 3000        | 7-35151  |
|   | Fuel Tank.....   | 3005        | 7-35190  |
| 4 | <b>ELECTRICAL</b>  |             |          |
|   | Electrical Troubleshooting and Schematics .....                    | 4001        | 7-35240  |
|   | Starter Motor .....  | 4003        | 7-35250  |
|   | Battery Testing, Maintenance and Booster Battery Connections ..... | 4004        | 7-35260  |
|   | Alternator .....   | 4008        | 7-35270  |
| 5 | <b>STEERING</b>  |             |          |
|   | Steering .....   | 5001        | 7-35290  |
|   | 2 Wheel Drive Front Axle .....                                     | 5003        | 7-35120  |
| 6 | <b>TRANSMISSION</b>  |             |          |
|   | PTO and Transmission Clutch, Release Bearings and Linkages .....   | 6001        | 7-36040  |
|   | Separating the Tractor to Service the Clutch .....                 | 6002        | 7-35330  |
|   | Separating the Tractor to Service the Transmission .....           | 6003        | 7-35340  |
|   | Servicing the Transmission.....                                    | 6005        | 7-35350  |
|   | MFD Drive Shaft and Transfer Gearbox .....                         | 6014        | 7-35390  |
|   | Rear Axles and Planetaries.....                                    | 6018        | 7-35410  |
|   | Power Take-Off (PTO).....  | 6019        | 7-35420  |
|   | MFD Axle.....  | 6021        | 7-35430  |
| 7 | <b>BRAKES</b>  |             |          |
|   | Brakes .....   | 7001        | 7-35460  |
| 8 | <b>HYDRAULICS</b>  |             |          |
|   | Hydraulic Troubleshooting and Schematics.....                      | 8001        | 7-35500  |
|   | Hydraulic Pumps and Drive Housing .....                            | 8002        | 7-35510  |
|   | Hydraulic Housing.....   | 8003        | 7-35520  |
|   | Hitch Adjustments.....   | 8005        | 7-35540  |
|   | Remote Valves .....  | 8006        | 7-35550  |
|   | Distributor Valve .....  | 8007        | 7-35560  |
|   | Hydraulic/Transmission Oil and Filter .....                        | 8009        | 7-35570  |

SECTION NO.

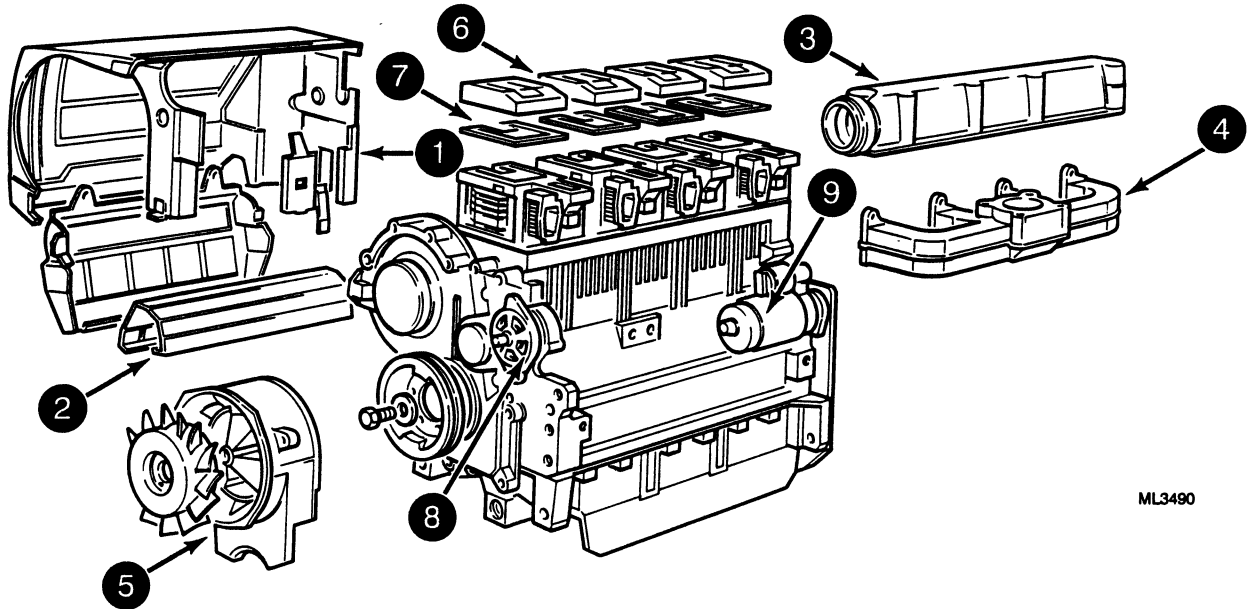
FORM NO.

9 CHASSIS AND MOUNTED EQUIPMENT

|  |      |         |
|--|------|---------|
| Pedal and Lever Adjustments.....   | 9001 | 7-35590 |
| Air Conditioning Troubleshooting - Visual and Operating.....                                     | 9002 | 7-35300 |
| Air Conditioner System Gauges and Testing.....   | 9003 | 7-35310 |
| Air Conditioner System Service - Discharge, Air and<br>Moisture Removal and System Charging..... | 9004 | 7-35360 |
| Air Conditioner System Components Service.....   | 9005 | 7-35630 |
| Cab Removal.....   | 9006 | 7-35640 |
| Cab Servicing and Operators Seat.....  | 9007 | 7-35650 |
| Platform Removal.....  | 9030 | 7-35690 |

# CYLINDER HEAD

## STEP 1

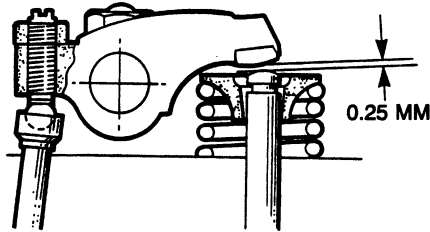


ML3490

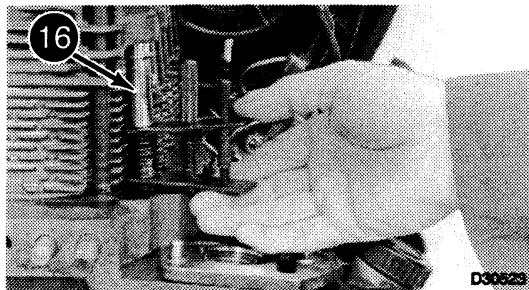
**NOTE :** Numbered items are in order of removal.

Remove items (1 - 9).

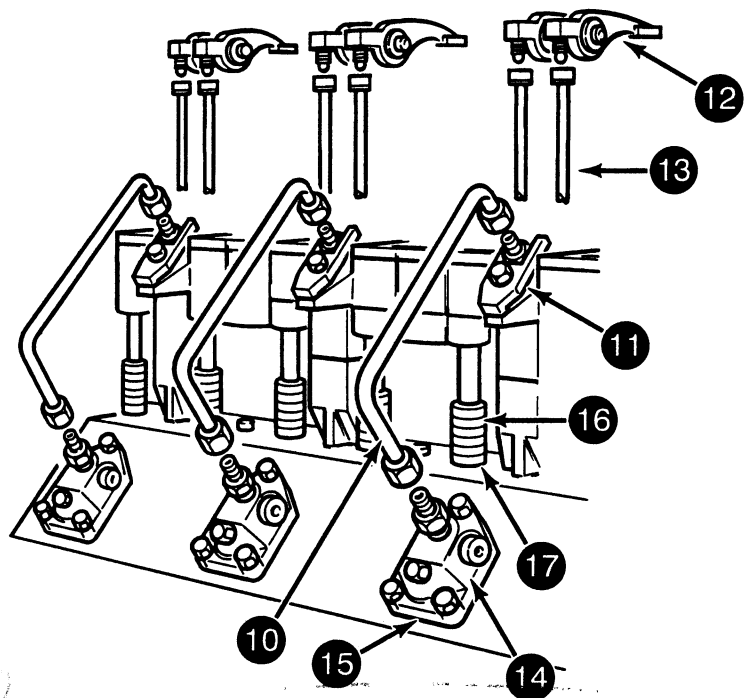
## STEP 2



VALVE ROCKER CLEARANCE 0.25 MM (COLD)



**NOTE:** To replace the pushrod tube oil seal (17) without removing the cylinder head. Remove the rocker cover, rocker assembly (12), pushrod (13) and use the spring compressor (CAS 2046) to remove the pushrod tube (16).

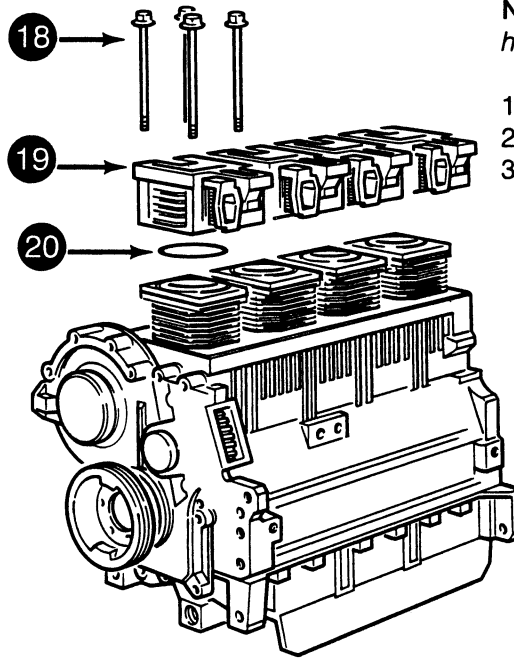


**NOTE :** Numbered items are removed in order of removal.

Remove items (10 - 15). Paint identification marks on the injection pump (keep the pump (14) and timing shims (15) together) for installation. Repeat for each cylinder.

**NOTE :** The pushrod tube (16) and pushrod tube oil seal (17) can be removed with the removal of the cylinder head.

STEP 3



**NOTE:** For installation tighten the cylinder head bolts evenly as shown:

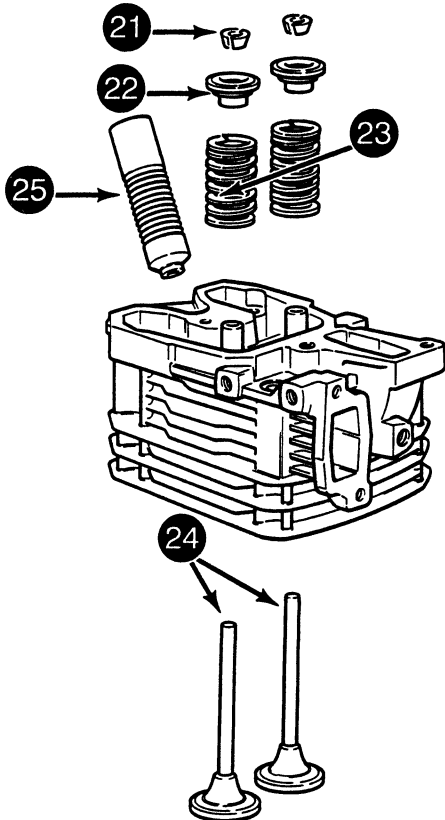
- 1st Stage ..... 19 Nm
- 2nd Stage ..... 49 Nm
- 3rd Stage ..... One ¼ of one turn

ML3491

**NOTE:** Numbered items are in order of removal.

Remove items (18 - 20). Repeat the procedure for the remaining cylinder heads.

STEP 4

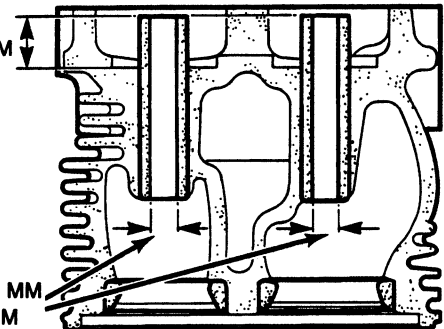


ML3453

Using a valve spring compression tool (OEM 6414). Remove items (21 - 24). Remove item (25).

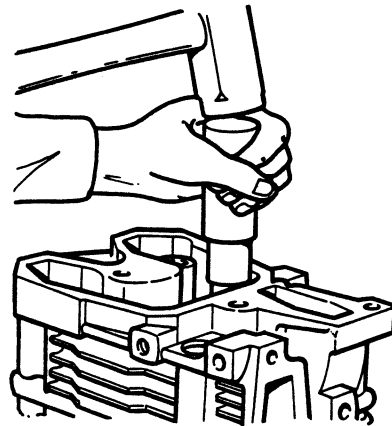
STEP 5

1. 17.7 TO 17.3 MM



2. NEW 9.04 MM TO 9.02 MM

3. 9.100 MM MAXIMUM WEAR



ML3394

If the valve guides are found to be damaged or worn, replace the valve guides. Install the new valve guides using valve guide installer (CAS 2043).

Thank you so much for reading.  
Please click the “Buy Now!”  
button below to download the  
complete manual.



After you pay.

You can download the most  
perfect and complete manual in  
the world immediately.

Our support email:

[ebooklibonline@outlook.com](mailto:ebooklibonline@outlook.com)