

# SERVICE MANUAL

**L213 / L215 / L218 / L220**

**L223 / L225 / L230**

200 Series Skid Steer Loader

**C227 / C232 / C238**

200 Series Compact Track Loader

**Part number 84522361**

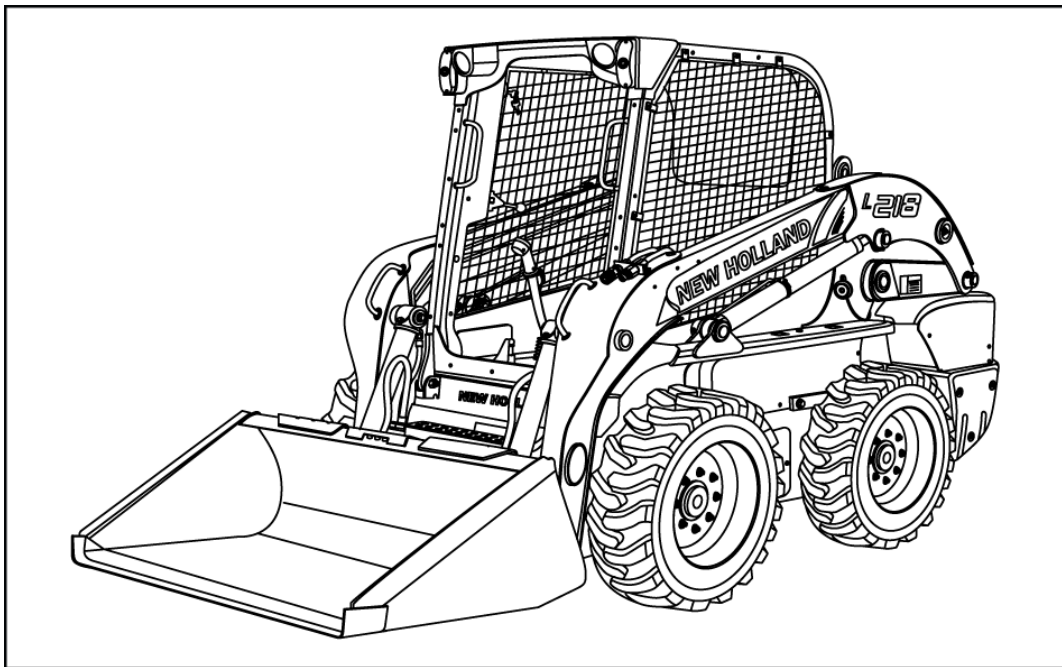
1st edition English

June 2011





## SERVICE MANUAL



**C227 , C232 , C238 , L213 , L215 , L218 , L220 , L223 , L225 , L230**

# Contents

---

## INTRODUCTION

## HYDRAULIC, PNEUMATIC, ELECTRICAL, ELECTRONIC SYSTEMS A

PRIMARY HYDRAULIC POWER SYSTEM.....	A.10.A
SECONDARY HYDRAULIC POWER SYSTEM.....	A.12.A
HYDRAULIC COMMAND SYSTEM.....	A.14.A
HIGH-FLOW HYDRAULIC POWER SYSTEM.....	A.16.A
ELECTRICAL POWER SYSTEM .....	A.30.A
LIGHTING SYSTEM.....	A.40.A
ELECTRONIC SYSTEM .....	A.50.A
FAULT CODES.....	A.50.A

## ENGINE AND PTO IN ..... B

ENGINE .....	B.10.A
FUEL AND INJECTION SYSTEM.....	B.20.A
AIR INTAKE SYSTEM.....	B.30.A
ENGINE COOLANT SYSTEM .....	B.50.A
STARTING SYSTEM .....	B.80.A

## TRANSMISSION, DRIVE AND PTO OUT ..... C

TRANSMISSION Hydrostatic.....	C.20.F
-------------------------------	--------

## AXLES, BRAKES AND STEERING..... D

Final drive .....	D.15.A
Final drive Hydraulic drive .....	D.15.C
STEERING Mechanical .....	D.20.B
PARKING BRAKE Hydraulic .....	D.32.C
WHEELS AND TRACKS Tracks .....	D.50.B
WHEELS AND TRACKS Wheels.....	D.50.C

## FRAME AND CAB ..... E

FRAME Primary frame .....	E.10.B
SHIELD.....	E.20.A

USER CONTROLS AND SEAT .....	E.32.A
USER CONTROLS AND SEAT Operator seat .....	E.32.C
USER PLATFORM .....	E.34.A
ENVIRONMENT CONTROL Air-conditioning system .....	E.40.C
SAFETY SECURITY ACCESSORIES Safety .....	E.50.B
<b>FRAME POSITIONING .....</b>	<b>F</b>
STABILISING Ballasting .....	F.20.B
<b>TOOL POSITIONING .....</b>	<b>G</b>
LIFTING .....	G.10.A
TILTING .....	G.20.A
LEVELLING .....	G.30.A
SECONDARY FUNCTIONS Hydraulic .....	G.90.C
<b>HITCH AND WORKING TOOL .....</b>	<b>H</b>
BOOM Lift .....	H.20.B
ARM TOOL ATTACHMENT Tilt .....	H.30.C
SINGLE ARM Lift .....	H.40.B
SINGLE ARM TOOL ATTACHMENT Tilt .....	H.50.C
<b>EXCAVATING AND LANDSCAPING .....</b>	<b>J</b>
DIGGING Non-articulated digging tools .....	J.20.B
CARRYING Unarticulated tools .....	J.50.B
COUPLING Mechanical coupling .....	J.80.B
COUPLING Hydraulic coupling .....	J.80.C

Thank you so much for reading.  
Please click the “Buy Now!”  
button below to download the  
complete manual.



After you pay.

You can download the most  
perfect and complete manual in  
the world immediately.

Our support email:

[ebooklibonline@outlook.com](mailto:ebooklibonline@outlook.com)